

Choiseul Bay Climate Change Adaptation Plan, Solomon Islands

A tropical beach scene with people and a boat. In the foreground, a large, leafy tree branches over a sandy beach. Several people, including children and adults, are gathered near a small blue boat at the water's edge. The water is a clear, vibrant turquoise, and the background shows a dense line of tropical vegetation and palm trees under a cloudy sky.

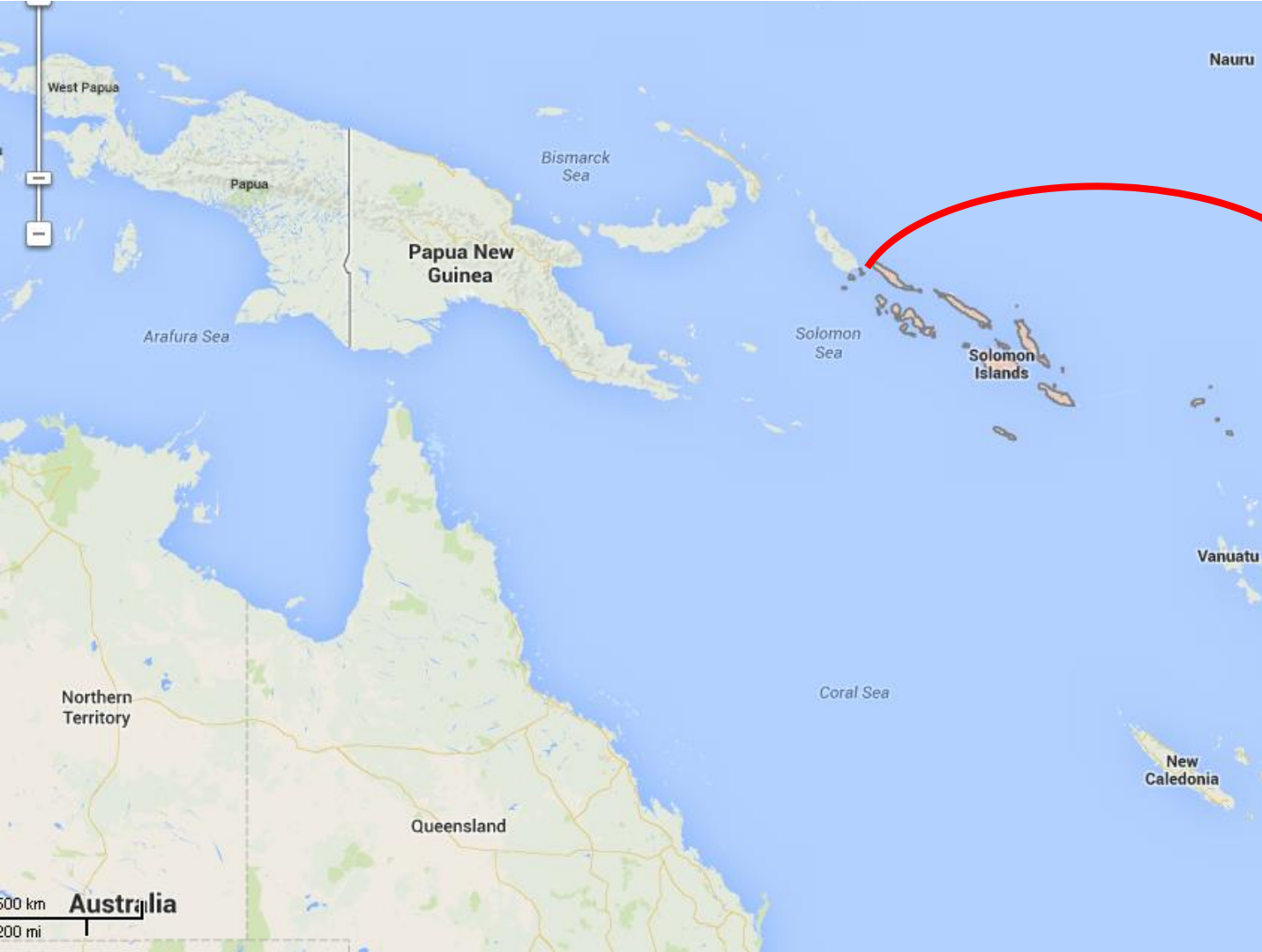
Ms Shannon McGuire, Principal Planner,
Buckley Vann Planning + Development
Commonwealth Association of Planners
Fiji | 9 November 2016

BuckleyVann
PLANNING + DEVELOPMENT

- Context
- About the Choiseul Bay Climate Change Adaptation Plan
- Engaging the community about risk and adaptation
- Planning and relocating a new town
- Key messages



Image courtesy of The Age (Vanishing Island Interactive web-article)



Study area



Program deliverables



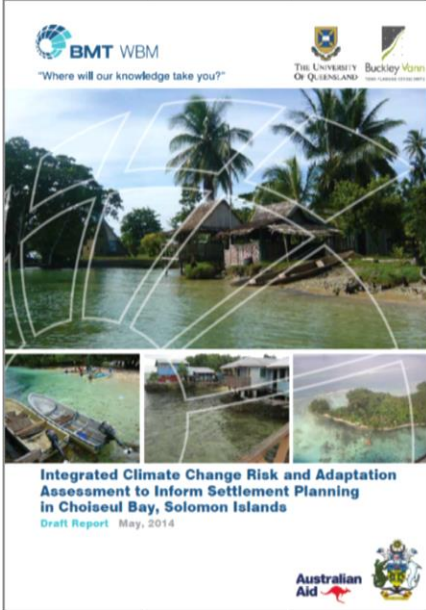
🌴 Natural hazard mapping:

- Tsunami, coastal storm tide inundation and flooding
- Time periods: 2014, 2030, 2055 and 2090
- SLR projections based on 5th (IPCC) report

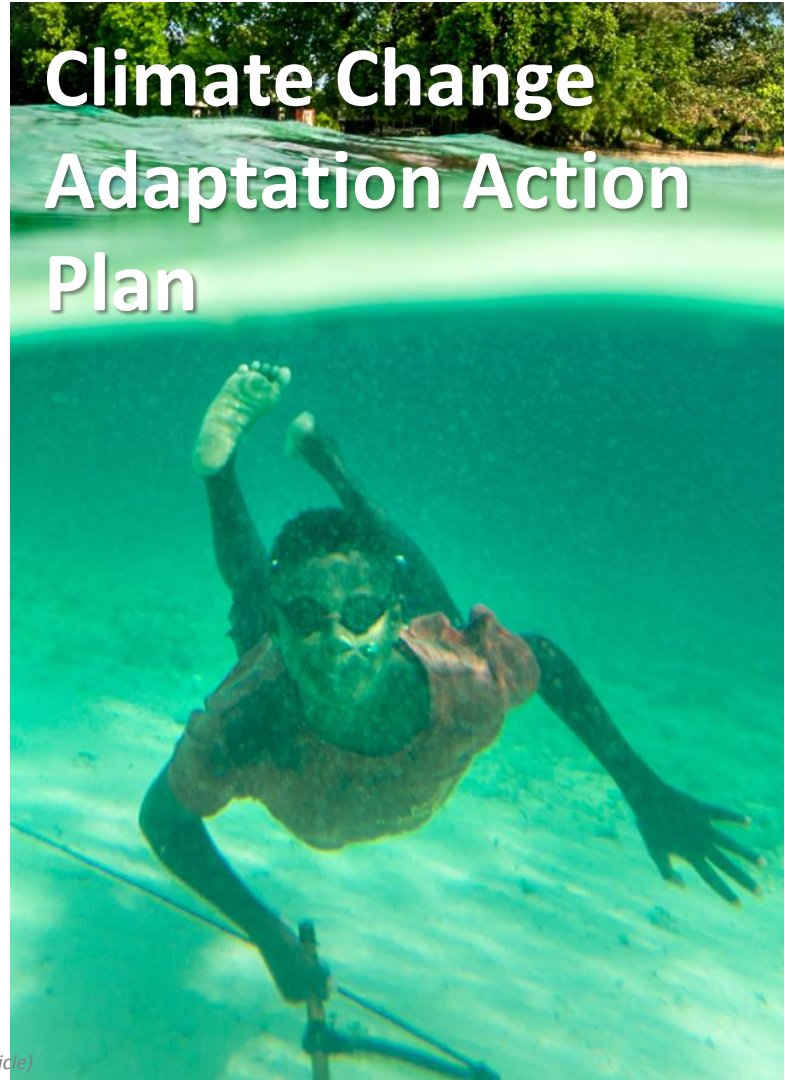
🌴 Risk assessment and evaluation of adaptation options

🌴 Vision and Local Planning Scheme for a new town

🌴 Adaptation Action Plan



- Emergency Response Plan
- Asset and infrastructure management
- Shoreline revegetation
- Monitoring
- Vision and Planning Scheme



Climate Change Adaptation Action Plan

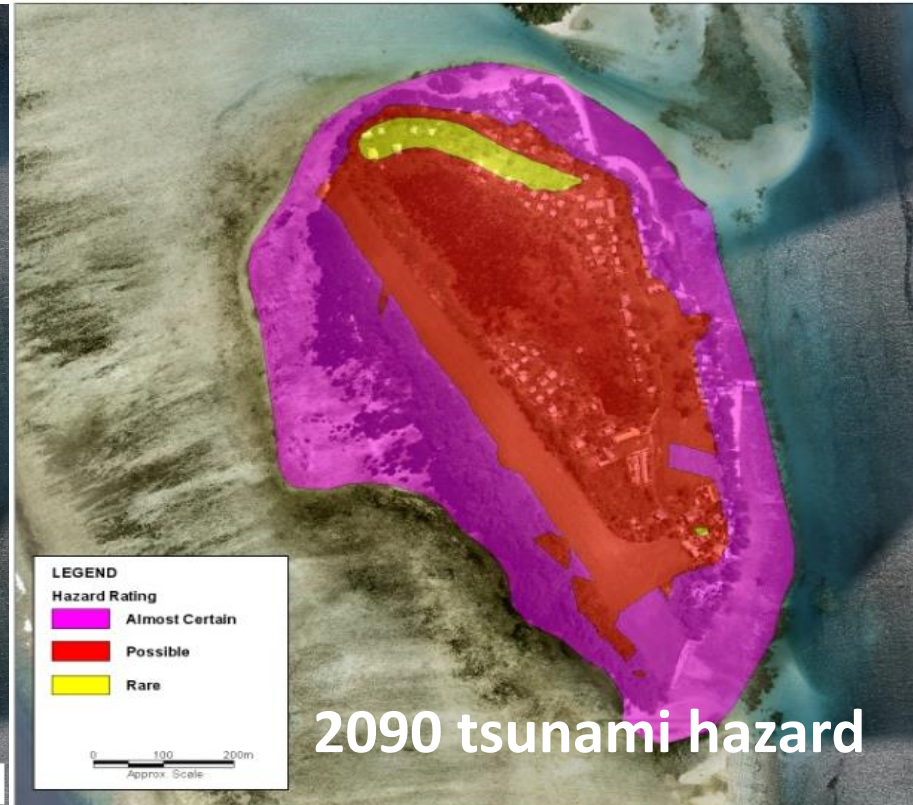
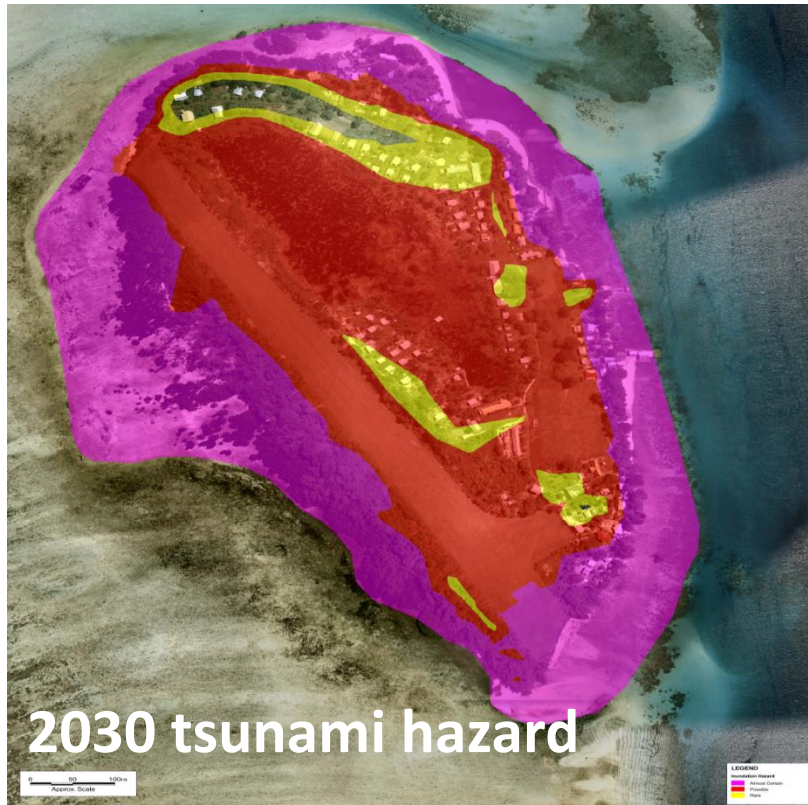
- Taro Island very low lying
- Major coastal hazards:
 - Tsunami
 - Coastal storms and storm tide inundation
 - Shoreline erosion
 - Climate change and SLR will increase intensity and frequency of hazards
- People fearful of tsunami – strong desire to relocate.
- Evacuation response risking lives.
- People seeing changes in ocean and loss of land.
- Vulnerability increasing as development continues – limited land supply.

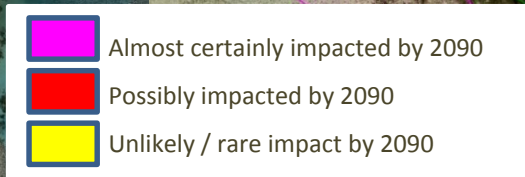
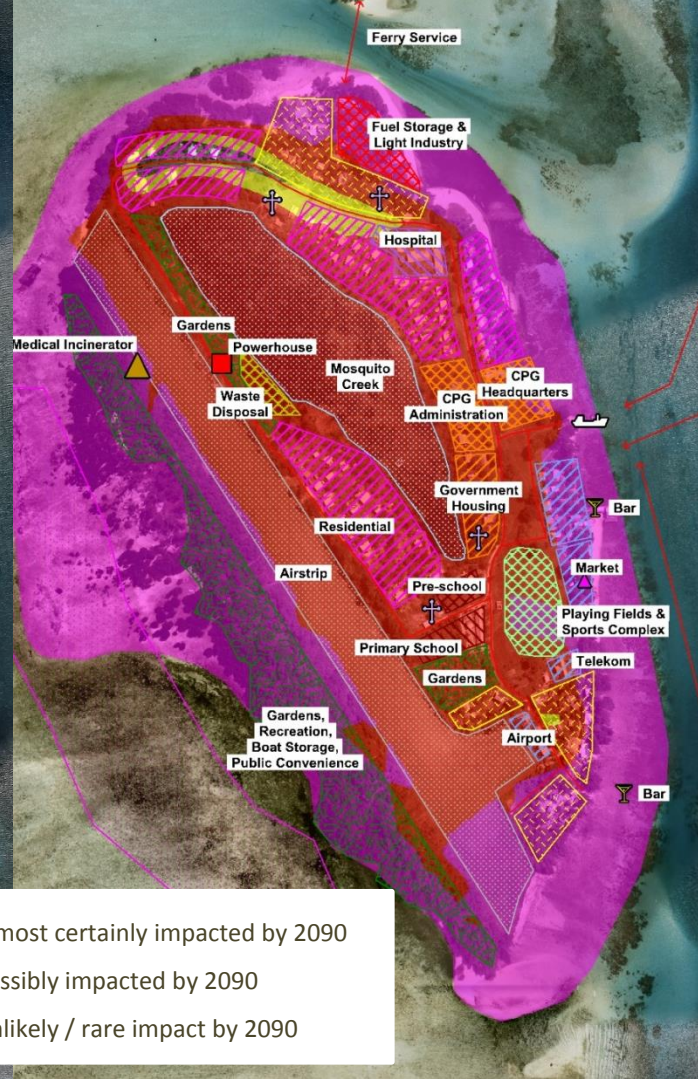
Image courtesy of The Age (Vanishing Island Interactive web-article)

An island community's story



Extent and likelihood of coastal hazards







Building community resilience



Needs an understanding of:

1. Risk and consequence
2. Community tolerance for risk

- Avoid or protect
- Accommodate
- Accept or retreat

3. Community capacity to respond to emergency situations
4. Governance capacity to implement actions

- Fundamental to all stages
- Culturally appropriate
- Lead the community on a '*technical journey*'
- Make complex things simple
- Highly graphical engagement materials
- Show how feedback was reflected in:
 - refinement of risk assessment outcomes
 - adaptation options
 - planning for new town

"The project followed the ways of our traditions – talking with people, listening to people and reflecting the desires of the people."

Jackson Kiloe, Premier Choiseul Province

Conversations about risk and adaptation



Conversations about risk and adaptation



- Community ownership important because:
 - risk assessment is subjective and relies on judgement decisions
 - community engagement used to validate risk assessment outcomes
- Community engagement also ensures:
 - local knowledge is reflected in adaptation options
 - options are practical, realistic and within means and financial constraints of community
 - options are acceptable to community

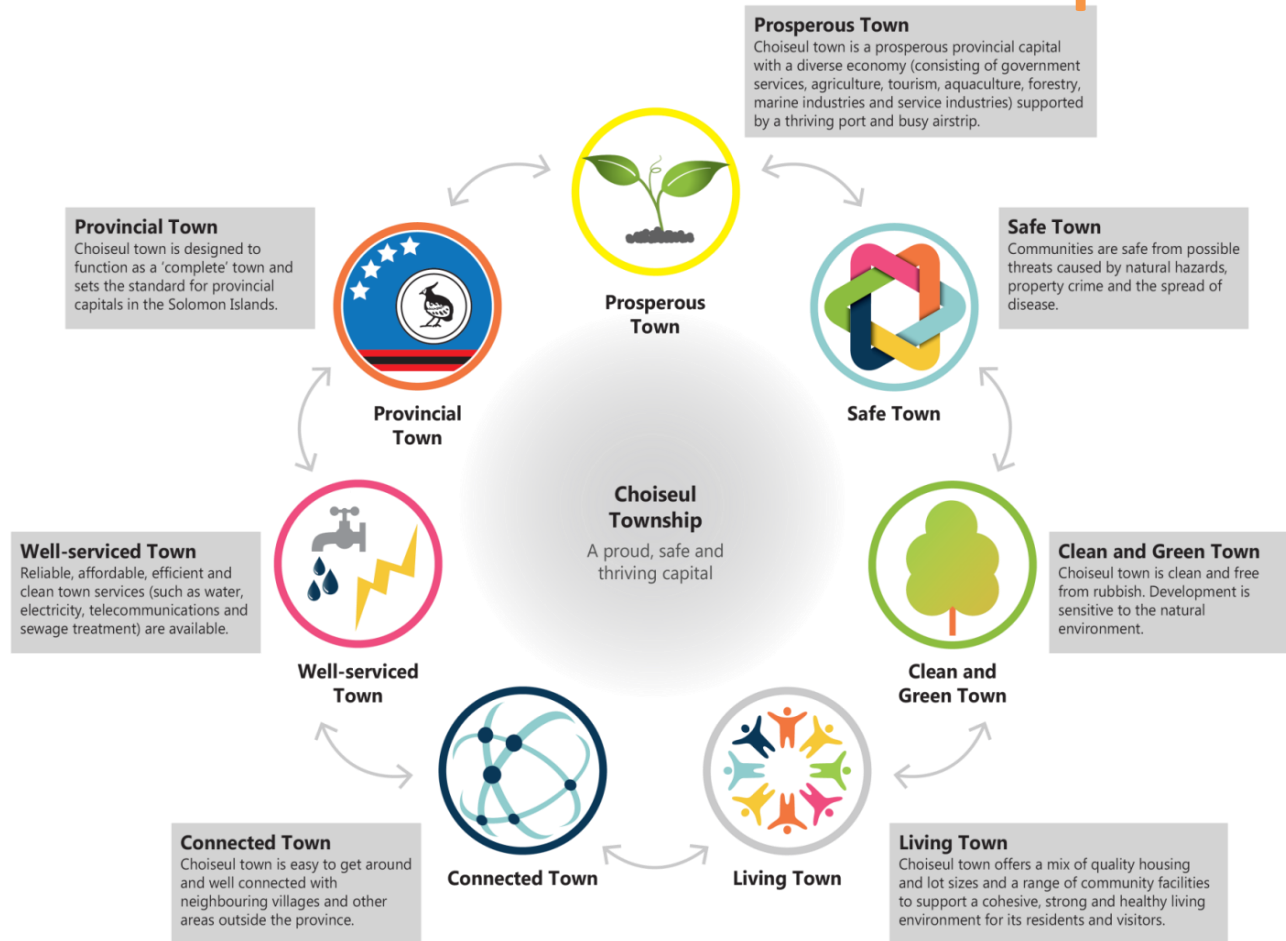
Planning and relocating a new town

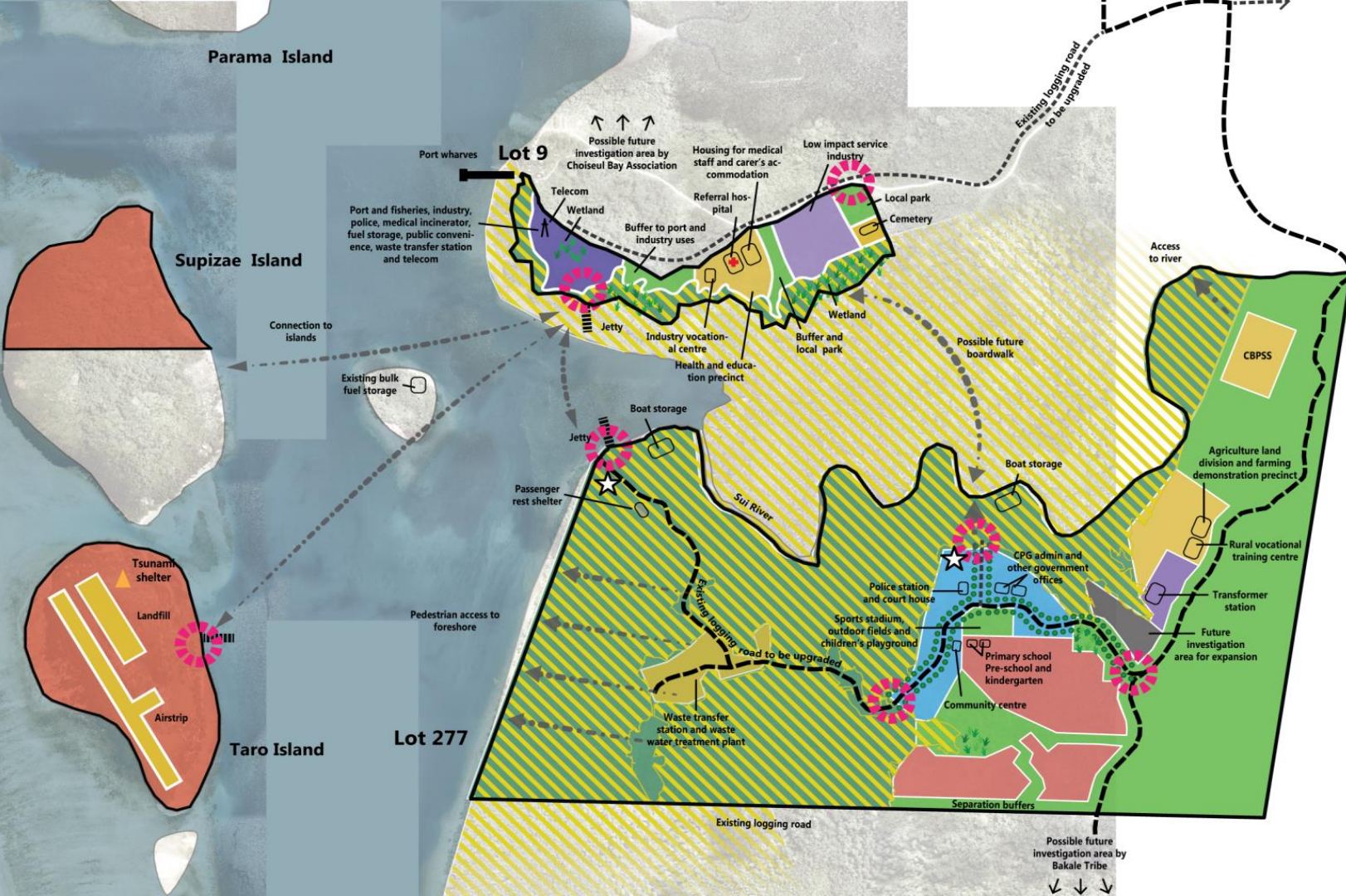


Image courtesy of The Age (Vanishing Island Interactive web-article)

- Relocation to occur b/w now and 2030
- Program of works for delivery
- Infrastructure leading development
- Planning scheme – key statutory tool
- Discourages new development on Taro, or build ‘higher & stronger’
- Delays in new town works will divert investment to existing assets - undesirable
- Vision for new town – very powerful

Vision for New Provincial Capital





Strategic Plan

For Choiseul Bay Town and Taro Island

Legend

Local planning scheme area and land owned by CPG

- Zones**
- Limited Development
 - Environment and Conservation
 - Open Space, Recreation and Drainage
 - Town Centre Core
 - Community Living
 - Port and Industry
 - Low Impact and Service Industry
 - Future Investigation
 - Special Purpose

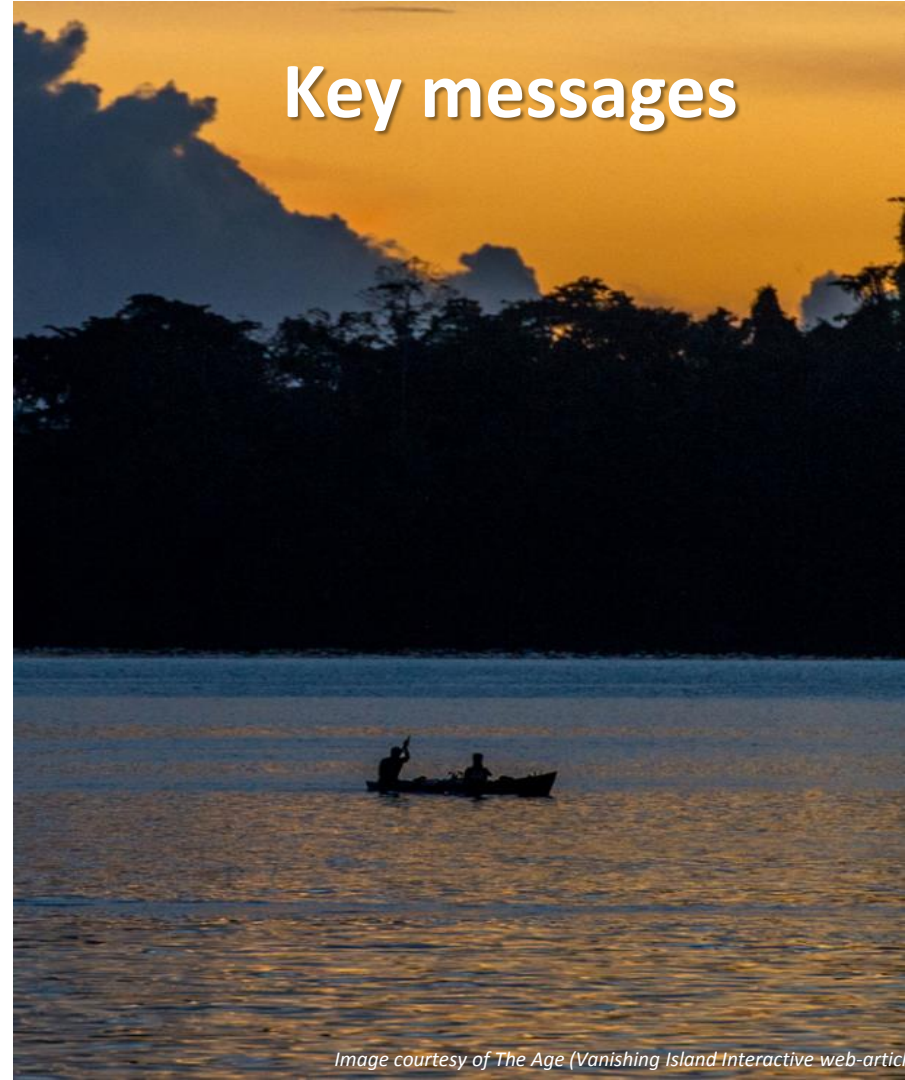
- Natural Hazard Area and Coastal Vegetation
- Indicative Location of Key Land Uses
- Gateway Entrance
- Indicative Location for Market
- Indicative Location for Future Highway
- Existing Logging Road
- Street Trees
- Key Access Routes
- Wetlands and Drainage Catchments
- Jetty Location (subject to detailed assessment)
- Tsunami Shelter



Disclaimer: This plan is for informational purposes and may not have been prepared for, or be suitable for, legal, engineering, or surveying purposes. The data herein is derived from various sources. Therefore, BuckleyVann gives no warranty in relation to the data displayed on this map. (including, but not limited to, accuracy, completeness, reliability, or suitability for any purpose) without limitation, liability or responsibility for any loss, damage or costs (including consequential damages) resulting from any use of the data.

Key messages

1. Community engagement plan – key tool.
2. Community and political ownership is critical – “top-down” and “bottom-up” approach.
3. Communicate science and risk simply.
4. Prioritise risks and stage actions.
5. Use a range of delivery tools for actions.
6. Actions must be within community means and capacity.
7. Local knowledge and community values essential to inform options.
8. Focusing on values puts emphasis on the things that matter most to people.



Acknowledgements



BuckleyVann
PLANNING + DEVELOPMENT

smcguire@buckleyvann.com.au



philip.haines@bmtwbm.com.au



<http://www.theage.com.au/interactive/2015/the-vanishing-island/>