

ANNUAL REPORT 2020

*Planning together
for a better New Zealand*



NEW ZEALAND
PLANNING INSTITUTE®
Te Kokiringa Taumata

***"A plan that everyone dislikes for different reasons
is a success. A plan everyone dislikes for the same
reason is a failure. A plan that everyone likes for the
same reason is an act of God!"***

Richard Carson



SUMMARY

2020 – what a year.

Filled with challenges as well as opportunities, it saw us continue to push towards our strategic goals, including being recognised by Central Government as a key stakeholder in the reform process and completing stage one of our Constitution review, in which we formalised the te ao Māori seat on our Board.

We responded to the pandemic by adjusting the annual CPD requirements and shifting CPD online. We introduced new opportunities

for member engagement with panel discussions and lunchtime sessions. These initiatives proved very popular, and we will continue on-line panels and lunchtime sessions in 2021. We were also forced to postpone our annual conference and we held the first streamed NZPI AGM which attracted a record number of attendees.

Through it all we continued to engage with Central Government around reform, with international partners on global issues

facing the planning profession and with our supporters on local challenges and opportunities in the profession.

We could not have done this without your support and so I thank you, our membership, for the many and varied ways you supported us as we all felt our way through all 2020 threw at us. We look forward to your continued support and engagement as we move into 2021 and the challenges and opportunities it will undoubtedly present.



CONTENTS

4

Year in Review

8

2020 Award
Winners

12

Our Board and
Officers

13

Our history

14

Draft Minutes
2020 AGM

18

Financial
Foreword

19

Independent
Auditor's Report

20

Financial
statements

31

Membership
directory

38

2021 AGM Agenda

THE YEAR IN REVIEW

2020 was challenging, disrupted and – a very over used word – unprecedented. However, the last 12 months have not been absent of progress for the Institute, or the profession. So, while 2020 has not played out like any of us thought it would 12 months ago, this is an opportunity to look at the progress we have made rather than the difficulties we faced.

The most significant step we took as an Institute in 2020 was the formalisation of a Te ao Maori seat on our governance Board through the adoption of a new Constitution. This has been years in the making and is a major step on our journey as Te Kokiringa Taumata New Zealand Planning Institute, recognising the uniqueness of our social and cultural context. We said it when we announced the new Constitution, but we again want to thank those who were instrumental in achieving this milestone.

Another notable achievement for the Institute was moving and expanding our CPD programme into the on-line environment. This enabled us to better serve our members in more remote areas and the addition of panel discussions and targeted lunchtime sessions has provided increased engagement opportunities, especially for our senior members. We are thankful to all the presenters who worked with us on this move. We appreciated your willingness to work alongside us as we all worked out

how to move our traditional professional development programme online in a highly compressed timeframe. It has been heartening to hear the positive feedback from members thankful for this shift, especially during lockdown when points of connection were limited.

2020 also signalled the start of the most significant reform of our resource management system in a generation. We have been actively engaged in the reform process to date and are recognised by the government as a key stakeholder in the reform process. While we know the hard work is just starting, we would be remiss if we did not acknowledge the many members that have already helped shape the reform, from the branch events at the start of the year and the resulting submissions through to our on-going engagement with Central Government. We specifically want to acknowledge Amelia Lindsey for her work as a member of the panel that produced the 'New Direction for Resource Management in New Zealand' report which has been generally accepted by government as the template for reform. We look forward to continuing to champion the planning profession in this reform process over the coming months.

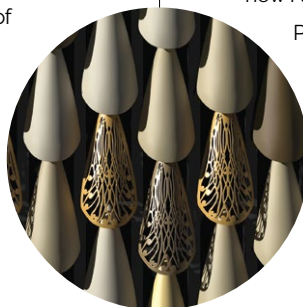
We celebrated some other successes in 2020 – both individual and organisation wide – through the annual awards, the DSA's and the recognition of a new Fellow of the Institute. Congratulations to all the award recipients

– peer recognition of your achievements is hugely significant, and you have every reason to be proud.

2020 also saw the establishment of a new NZPI special interest group.

PlanTechNZ was established to support the Institute, the membership and the profession in engaging with technological advances and the opportunities new technologies present. We thank the members who have supported PlanTechNZ.

Before we go any further we want to thank the many and varied volunteers who contribute so much to the success of the Institute and progression of the profession. To the Branch and SIG committees, the national representatives, the members who represent NZPI on various fora and work groups, the members who serve on interview panels or on our various committees such as PAC and the Tertiary Accreditation Panel. We thank you for your willingness to serve. As an Institute we particularly want to thank the Board for their support and leadership throughout 2020. You have carried a larger load than is normally expected of a Board, but have been gracious, enthusiastic, and forward looking throughout. Thank you.





NZPI Membership

Even with all the challenges of 2020, NZPI experienced continued growth in membership. Total members increased by 3% over the 12-month period. While this is lower than in previous years, we were pleased that the increase showed membership continued to be valued even in the challenging environment of the last 12 months.

We welcome all new members and look forward to providing them with the services and support they need to develop as a professional planner in New Zealand



Conference and events

The Nelson/Marlborough branch had worked with the national office to prepare a stimulating programme, a series of educational field trips and engaging social events for the 2020 National Conference, just to see it postponed approximately two weeks before it scheduled to start due to the pandemic.

We are extremely grateful to the volunteers on the local committee, the presenters, sponsors – especially our Platinum Sponsor WSP, our suppliers and all those who had registered to attend for supporting us in the postponement of the Conference. It was an extremely challenging situation with significant health and safety, reputational and financial implications and like you, we were very disappointed to have had to postpone Conference. We had great registration numbers and it was on track to be the biggest Conference in recent years.

The financial impact of postponement was minimised thanks to the hard work the national office events team and the local conference support committee had put into building strong relationships with our Conference suppliers. As a result, we were able to transfer most of the Conference expenses to the 2021 event. While we have incurred costs for Conference services that were already used such as the design of the conference materials, the financial impact could have been much worse.

Also affected by the postponement were the

Papa Pounamu Hui and Emerging Planners Congress. Our thanks go to the organisers of these critical events for their support as well.

We look forward to seeing you in Nelson in 2021.

The other major event we are involved in each year is the Environmental Compliance Conference. This was scheduled to be held in Christchurch, the first time it had been in the South Island for a number of years. Like our national conference it was also a victim of the pandemic and was similarly postponed to 2021.



THE YEAR IN REVIEW

Central Government

Throughout 2020, NZPI's engagement with Central Government has been affected and influenced by the pandemic, and the general election which was held on 17th October 2020. Nevertheless, Central Government has progressed with speed on a number of major policy interventions including those relating to the Resource Management System, Climate Change and Three Waters.

NZPI took up several opportunities to engage with RM Review Panel recommendations at the draft stage. This report focuses on activities after the review report was made public, and since the incoming Government has made its preliminary decisions about reform.

NZPI's policy adviser prepared an analysis of the RM Review Panel report recommendations which were circulated to members, Feedback on this report, and Board guidance informed the preparation of various communications with MfE officials with an objective of ensuring NZPI advocacy and influence at the table during legislation design and reform planning.

NZPI Board members and the policy adviser participated in a series of zoom workshops convened as part of the engagements processes of NZ's Climate Change Commission, and with MHUD on the development of a General Policy Statement on Housing and Urban Development. These have enabled developed NZPI positions to be advanced for consideration alongside those of other advocacy and representative institutions.

NZPI developed a series of zoom panels on significant topics including RM Reform. This enabled members to participate and engage in facilitated sessions where experts from up and down the country were able to advocate positions and stimulate discussion. These inputs have helped inform NZPI engagement with Central Government.

NZPI is also grateful to the Ministers and MP's who contributed to an interactive panel discussion for the NZPI membership on the reform of New Zealand's resource management system. It was extremely beneficial to the membership and the Institute to have the various Ministers and MP's present their parties positions on the reform in the build up to the general election.

In a joint letter prepared with LGNZ and RMLA, NZPI wrote to the Hon David Parker, in advance of the general election. The letter highlighted the need to ensure that any package of resource management reforms finally agreed by Parliament benefits from implementation that is properly planned, managed, funded and resourced. It also noted the proliferation of statutory planning documents produced up and down the country, in the absence of a properly resourced and planned implementation strategy, after the RMA was enacted in 1991.

This letter also drew attention to critical sections of the report, in particular those headed "Insufficient capacity, capability and funding", and "Institutional arrangements" which questioned the capability of the Ministry for the Environment to lead and support the scope and scale of change that can be anticipated from these reforms

to our planning processes and systems. It highlighted the role played by MfE's "Quality Planning" website in providing practice and implementation guidance on RMA provisions, noting that this support tool, along with other guidance tools such as National Planning Standards, took years to be developed in response to calls from planners and practitioners across the country for consistency, interpretation, and practice guidance. In conclusion it offered the signatories support in capability building and implementation, as well as the shaping and development of the policy as part of the reform initiative.

It is expected that 2021 will provide significant and on-going opportunities for engagement with MfE, Ministers, NZPI members, and other stakeholder organizations whose interests overlap those of NZPI (including LGNZ and RMLA in particular).

Constitution Review

A review of the NZPI Constitution was identified by the current NZPI Board as a key task to be completed in the current Board term. Therefore, the Board was pleased to announce in 2020 that a new Constitution had been adopted following a unanimous vote by the Full members. This new Constitution heralded a significant step in the development of the Institute, recognising the uniqueness of our social and cultural context as Te Kokiringa Taumata New Zealand Planning Institute through the formal inclusion of a ninth seat on the Board representing the te ao Māori voice within our membership. This milestone is the result of the hard work and commitment of a lot of people, from the founding members of Papa Pounamu to the current Board members and many many in between. This new seat will be included in the election of the next Board.

In addition to formalising the te ao Māori seat on the Board, the new Constitution tidied up the issues that resulted from the structure of the old Constitution as well as positioning the Institute for compliance with the new Incorporated Societies Act when it is released. The Board thank all those members who attended the consultation sessions or provided written feedback throughout the development of this new Constitution.

The new Constitution is supported by a new set of Regulations ensuring the previous governance rules are carried over, but in a more appropriate format, while also ensuring on-going legal compliance with the statute we operate under.



2020 Reginald Hammond Scholarship was presented to Elisabeth Boyle



The Lance Leikis Emerging Planner Award was shared by Kaitlyn Ritchie and Eseta Maka-Fonokalafi (pictured above)



Alfred O. Glasse Award was presented to Colin Wetherall

Scholarships

Due to the pandemic the 2020 awards, including the annual scholarships, were presented online. However this did nothing to diminish the quality of the entries in 2020.

The 2020 Reginald Hammond Scholarship was presented to Elisabeth Boyle. The Robert Kennedy Grant was awarded to Associate Professor Caroline Miller. The Lance Leikis Emerging Planner Award was shared by Kaitlyn Ritchie and Eseta Maka-Fonokalafi and the Alfred O. Glasse Award, which recognises outstanding services to planning by a non-planner, was presented to Colin Wetherall.

2020 also saw the introduction of the Papa Pounamu Whakatutukitanga Scholarship. As part of our ongoing promotion of increasing Māori participation in the planning profession, and with the generous support of sponsors WSP, this scholarship has been established to support the development of rangatahi into the planning profession.

The inaugural winner was Lucy Sanson. Of Kāi Tahu iwi, Kāti Taoka and Kāti Moki hapū, Lucy



Lucy Sanson - Papa Pounamu Whakatutukitanga Scholarship

is starting her third year studying a Bachelor of Resource and Environmental Planning at Massey University. The WSP sponsorship provided \$2000 towards her studies and employment over the summer, where she joined the Auckland planning team enjoying a variety of roles and responsibilities.

THE YEAR IN REVIEW

CAP International Award

Now in its third year the CAP International Award again recognised a number of New Zealand projects. Our congratulations go to

- Tupuna Maunga Management Strategies, (Auckland, New Zealand).
- Reaching our diverse communities with AI: The Talanoa Project (Auckland, New Zealand)
- Kaituna River Re-diversion and Maketu Estuary Enhancement (Bay of Plenty, New Zealand)

for being highly commended in the 2020 CAP International Award.

Distinguished Service Awards

Across the nation planners are achieving outstanding results, many doing so year on year. It is in recognition of these members that the Distinguished Service Awards were established. The Award acknowledges a significant contribution by a member over many years to the practice of planning; research that advances the theory and practice of planning; national or international recognition of a member as a leader in the planning profession; or a major contribution to the affairs of the Institute. In 2020 we recognised the impressive work of six members at events across the country. These six members were all nominated by their peers and unequivocally supported by the Awards Committee in being awarded Distinguished Service Awards.



Ilan Munro



Kim Hardy



Greg Vossler



Karen Blair



David Whitney



Simon Mutohori

The 2020 Distinguished Service Award recipients were:

- Ilan Munro
- Kim Hardy
- Greg Vossler
- Karen Blair
- David Whitney
- Simon Mutohori

Fellow

Being granted Fellowship of the NZPI is the highest peer recognition an NZPI Member can achieve. It was with great pleasure that the NZPI bestowed this honour on Jan Crawford in 2020. The Fellowship recognises Jan's outstanding contribution to the Institute and her influence on the advancement of planning practice. This includes her work in alternative dispute resolution and environmental conflict resolution, technical advice on the content of RMA plans, environmental education



Jan Crawford

and CPD education for the Institute and other groups.

Jan is the quintessential professional planner. She has direct experience in all facets of the profession and in particular in research, training, and capacity development. She "walks the talk". There are few members who have made such a significant contribution to the institute and we congratulate Jan on achieving this, our highest level of recognition.

Annual Awards

The 2020 awards judging panel were again faced with a difficult task of having to decide between a diverse range of highly deserving projects and award nominees. The judging panel put significant time into reviewing the entries, spending hours reading about the different projects and then discussing their various merits before ultimately making the difficult decision of which should be recognised as the winner in each of the award categories. Our thanks go to the members of the judging panel for the time and wisdom they give to help us celebrate the great work being done in the planning profession across New Zealand.

We wish to thank all the nominees for the work they put into showcasing a variety of exceptional projects. Congratulations to all award winners.

Annual Award Winners

The Nancy Northcroft Planning Practice Award is the Institutes supreme award for excellence in planning practice.

This award recognises

- Creativity and innovation in the methods involved,
- The quality and innovation of presentation of any report or material,
- The extent to which best-practice planning process and practice, including sustainable management is promoted

The winners of the 2020 Nancy Northcroft Supreme Award were

- **Te Arawa Lakes Trust**
- **Conroy and Donald Consultants Ltd**

For their work on the Te Arawa Cultural Values Framework and accompanying Environmental Plan

NZPI Best Practice - District / Regional Planning

- **Whangarei District Council**

For their work on the Whangarei City Core Precinct Plan project.

NZPI Best Practice – Integrated Planning and Investigations

- **The Church of Jesus Christ Latter-day Saints**
- **Bloxam Burnett & Oliver**
- **Construkt Associates**
- **Mansergh Graham Landscape Architects**

For their work on the Temple View project.

Wellington City Council were also recognised with a Highly Commended in this category for their work on the Wellington Housing and Business Capacity Assessment

NZPI Best Practice – Consultation and Participation Strategies and / or Processes

- **Auckland Airport**

For the Auckland Airport Community Engagement Strategy – The Northern Runway Interactive Map



NZPI Best Practice – District / Strategic Planning & Guidance

- **DCM Urban Design Limited**

For the Hutt City Medium Density Design Guide

NZPI Best Practice – Non-statutory Planning

- **Te Arawa Lakes Trust**
- **Conroy and Donald Consultants Ltd**

For the Te Arawa Cultural Values Framework and accompanying Environmental Plan

NZPI Rodney Davies Project Award

- **Bay of Plenty Regional Council**
- **WSP**

For their work on the Kaituna River Re-diversion and Maketu Estuary Enhancement project

NZPI John Mawson Award of Merit

- **Emily Grace**
- **Ben France-Hudson**
- **Margaret Kilvington**

For their work on Reducing risk through the management of existing uses: tensions under the RMA.



THE YEAR IN REVIEW

CPD

The CPD programme was significantly impacted by the pandemic in 2020. However, the limitations of lock downs and the shift to working from home and meeting on-line also presented an opportunity which we took advantage of. A rapid shift to on-line delivery meant we were able to deliver 72 CPD courses, which were attended by over 1000 members, across 2020. Most of these courses were delivered on-line, but we were excited to be able to get back to some face-to-face courses as the year ended.

Our thanks go to the presenters for their flexibility and willingness to work with us as we moved our programme on-line. Our thanks also go to Manfred and Kirsten from the national office for the extra work they put in to support our presenters and members in the shift to on-line delivery.

We also increased our CPD offering with the introduction of panel discussions early in the first lock down. These panel discussions

proved very popular and provided a much needed opportunity for stimulating discussion and engagement. Our thanks go to all the panellists and the facilitators for delivering panels that were so highly valued by our membership. Over the course of 9 months we delivered 12 panel discussions, starting with weekly panels during the first lock down and then slowly spreading further apart as we all adjusted to the new normal of remote working and lockdown uncertainty. These 12 panel discussions were extremely popular with almost 2000 members logging on.

In addition to the panels, we introduced lunch time sessions. These shorter, niche focused CPD sessions provided an opportunity for specialist training on topics that would not have been viable under the traditional face-to-face CPD model. We delivered 16 of these shorter sessions, and they attracted almost 700 members. Again, we are thankful to the presenters of these sessions.

Education

The Tertiary Accreditation Panel had to suspend accreditation visits and the NZPI Board made the decision to extend the accreditation of affected courses by 12 months. This ensured the affected courses did not lose support from their respective institutions while they waited reaccreditation.

We will restart the Tertiary Accreditation process in 2021.

PAC

PAC spent most of 2020 in hiatus due the pandemic. It did meet prior to the end of the year to review and discuss feedback gathered in a series of branch events about proposed adjustments to the NZPI alternate membership pathway and the Associate category. These discussions were ongoing at the end of the year.

Our thanks go to all the PAC representatives and to everyone who attended the branch events.

Professional Standards

NZPI PSC Complaints Received and Considered	
2010	4
2011	3
2012	1
2013	1
2014	4
2015	1
2016	3
2017	7
2018	2
2019	4
2020	2





***"Planning is bringing
the future into the
present so that you
can do something
about it now."***

— Alan Lakein

OUR BOARD AND OFFICERS

NZPI BOARD



Karyn Sinclair *Chair*
Luke O'Dwyer *Deputy Chair*
Andrea Harris *Board member*



Graeme McCarrison *Board member*
Jonathan Clease *Hon. Treasurer/Secretary*
Orchid Atimalala *Board member*



Reginald Proffit *Co-opted (non-voting)*
Sarah Jenkin *Board Member*
Shane Roberts *Board member*

NZPI STAFF



David Curtis *CEO*
Joel Cayford *Senior Policy Advisor*
Vanessa White *Events Manager*



Melissa Hubbard *Sales & Marketing Co-ordinator*
Manfred Lee *Membership & Operations Manager*
Savana Carroll *Office Administrator*



Anna Montgomery *Membership Co-ordinator*
Kirsten Orlandini *CPD and Events Co-ordinator*
Lee Parlane *Administrator*
Helen Parson *Events Manager (maternity cover, not pictured)*



NZPI HISTORY



Evolving and growing since 1931

The leading planning association in New Zealand, like the planning profession it serves, has evolved over many decades and so too has its name; ranging from the Town Planning Institute of New Zealand between 1931-1946, to its current name of The New Zealand Planning Institute from 1969. Throughout its various guises, five in all, the organisation has been led by 45 esteemed planners. In 2012, the title of 'President' was replaced by that of 'Chair'. The current Chair is Karyn Sinclair.

Past Presidents of the Institute

1931	H F Johnson K C
1931-1932	C K Grierson
1932-1935	S Blackley
1935-1936	A W De R Galbraith
1936-1937	H F Butcher
1937-1940	M G C McCaul
1940-1942	E H Andrews
1942-1943	A J Baker
1943-1944	R B Hammond
1944-1945	A H Bridge
1946-1947	J W Mawson
1947-1950	R B Hammond
1950-1952	C E H Putt
1952-1954	F C Basire
1954-1956	F W O Jones
1956-1958	A L Gabites
1958-1960	J W Cox
1960-1962	D G Porter
1962-1964	B Reynolds
1964-1967	G Dunn
1967-1969	N Northcroft
1969-1970	P W T Bagnall
1970-1972	D J Edmonson
1972-1973	M M Latham
1973-1975	K G Dobbie
1975-1977	F W Norton
1977-1979	R J P Davies
1979-1981	M E Jones
1981-1984	W D Ross
1984-1986	W A Robertson
1986-1988	D D Hinman
1988-1990	John Childs
1990-1992	Sylvia Allan
1992-1994	Lance Leikis
1994-1996	Leigh Auton
1996-1998	Jenny Dixon
1998-2000	Robert Schofield
2000-2002	Michael Foster
2002-2004	Paula Hunter
2004-2006	Cheryl Cleary
2006-2008	Michael Gunder
2008-2010	Hester den Ouden
2010-2012	Jane Douglas
2012-2017	Bryce Julyan
2017-current	Karyn Sinclair



AGM MINUTES

2020 Draft AGM Minutes Thursday 16 April 2020, 4:03 pm Zoom Streamed Event

Registered Attendees:

Jane Anderson, Thomas Anderson, Jade Ansted, Kestri Ariyanti, Orchid Atimalala, Kirsty Austin, David Badham, Marsha Badon, Simon Banks, Deanne Barretto, Jared Bartlett, Craig Batchelar, Matthew Bayly, Laurence Beckett, Karen S Bell, Clint Betteridge, Julie Bevan, Tanvir Bhamji, Mandy Bishop, Marcus Bishop, Robyn Blewett, David Boersen, Carlo Botha, Terence Boylan, Murray Brass, Michael Briggs, Jonathan Brown, Jesse Burgess, Alice Burnett, Micah Butt, Romae Calland, Sarah Cameron, Olivia Campbell, Jaimee Cannon, Ashlie Carlyle, Raewyn Catlow, Mark Charlesworth, Baris Chung, Vicki Clague, Jym Clark, Catherine Clarke, Larissa (Lara) Clarke, Jonathan Cleave, Dylan Cliff, Andrew Collins, Christine Coste, Rachel Cottam, Megan Couture, Stuart Crosswell, David Curtis, Jonathan Cutler, Denver D'Souza, Michael Dance, Lindsay Daysh, Leonard Dissanayake, Marian Dissanayake, Christopher Donnelly, Genevieve Doube, Jane Douglas, Loek Driesen, Matthew Dugmore, Stephanie Dwyer, James Ebenhoh, John Edmonds, Alice Fallow, Morgan Fallowfield, Shirley Chamberlin, Emma Fergusson, Sarah Fitzgerald, Miffy Foley, Marilyn Ford, Cara Francesco, James Fuller, Susannah Goble, Susan (Sue) Godbaz, Jesse Gooding, Emily Grace, Sean Grace, Robert Graham, Emily Greenberg, Lydia Guo, Michael Guy, Keith Hall, William Hall, Shaun Hamilton, Andrew Hammond, Ana Hancock, Rereata Hardman-Miller, Andrea Harris, Jenny Harrison, Sarah Hart, Carly Hinde, Sherilyn Hinton, Ross Holland, Emma Howie, Nevada Huaki-Foote, Alyson Hutton, Sarah Jenkin, Alex Jepsen, Tim Jiang, Juliet Johnson, Timothy Joll, Shona Jowett, Stephanie Jowett, Bryce Julyan, Stephanie Kane, Evan Keating, Jillian Kennemore, Peter Kensington, Steven Kerr, Matthew Kerr-Ridge, Daniel Kinnoch, Aidan Kirkby-McLeod, Nathaniel Landingin, Mark Laurensen, Helen Lawrence,

Teryll Lepper, Andreas Lilley, Brigid (Biddy) Livesey, Hugh Loughnan, Julia Lovelock, Wendy Macdonald, John Mackay, Philippa Mackay, Therese Malcon, Taunu Manihera, Phillip Martelli, Peter Matich, Tim Matthews, Rachelle McBeth, Graeme McCarrison, Gerard McCarten, Sarah McCarter, Damien McGahan, Bryan McGillan, Philip McKay, Claire McKeever, Adam Mercieca, Caroline Miller, Jack Mills, Olivier Monthule-McIntosh, Claire Morton, Alan Moss, Ayush Mudaliar, Brent Musk, Michael Nielsen, Shelagh Noble, Mary O'Callahan, Luke O'Dwyer, Greg Osborne, Kelly Parekowhai, Lee Parlane, Carey Pearce, Marguerite Pearson, Nadine Perera, Rebecca Perrett, Reuben Peterson, Peter Phillips, Nesh Pillay, Clare Piper, Samantha Pottage, Reginald Proffit, Sabrina Quarente, Christine Ralph, Rajiv Raman, Marilyn Regnault, Emily Reid, Hamish Rennie, Barbara Ribeiro, Andrea Rickard, Injoo Riehl, Hilary Riordan, Shane Roberts, Katrina Roos, Deborah Rowe, Jemma Ryan, Anna Sanson, Wendy Saunders, Kate Scanlen, Norbert Schaffoener, Kim Seaton, Nirosha Seelaratne, Daniel Shao, Stacey Sharp, Rachel Signal-Ross, Karyn Sinclair, Sukhdeep Singh, Suzienne Slegers, Hera Smith, Melinda Smith, Ella Sparrow, Mark St Clair, Hannah Staines, Philip Stickney, Gina Sweetman, Darryl Sycamore, Xuemei Tang, Carmen Taylor, Glenn Teal, Kirsten Tebbutt, Hannah Thomson, Ivan Thomson, Chloe Trenouth, Cozy Tsui, Perri Unthank, Jennifer Valentine, Victoria van der Spek, Nicolle Vincent, Eileen von Dadelszen, Paul Waanders, Louise Wai, Christina Walker, Siani Walker, Clare Wall Shaw, Cassey Wan, Kok Hong Wan, Shaoxu Wang, Wayne Wang, Melissa Warmenhoven, Penny Weng, Duncan Whyte, Olivia Whyte, Euan Williams, Grey Wilson, Kendra Wilson, Andrew Wood, Mikayla Woods, Jessie Xie, Janette Jiayi Yan, Yu Yi, Jo Young, Sean Zieltjes

Welcome

Karyn Sinclair, NZPI Chair, declared the meeting open and welcomed everyone. She acknowledged this was the first time the AGM had been streamed rather than delivered face-to-face. She acknowledged the larger than normal attendance and provided guidance on how the meeting would be managed as a streamed event.

Karakia

Reginald Proffit, NZPI co-opted Board Member, lead the meeting in a karakia.

Apologies

Sarah Jenkin; Namata Poutassi, Andy Ralph, Craig Mallet, Dennis Bush-King

Matter arising from previous minutes

Karyn advised the minutes from the 2019 AGM could be found on pages 20 and 21 of the Annual Report. No questions or corrections were identified from those minutes.

Motion: That the minutes of the 2019 AGM meeting be accepted.

Moved: Caroline Miller
Second: Katarina Tautoko
Hands raised 54

Karyn identified the assumption that everyone may have some questions about the impact of the current lockdown etc and advised the meeting would deal with those later in the agenda. She asked attendees to hold questions on this until then.

2019 in Review

Karyn spoke to the 2019 Annual Report. This started by highlighting the growth in membership. Karyn welcomed all new members. Her address included an update on the Board workplan noting progress has been made against all areas of this workplan in 2019, but a key initiative in the plan, especially given the current situation was the development and implementation of a new Financial Strategy. This strategy was summarised in the Annual Report. She noted other strategic initiatives progressed in 2019 included the review of Constitution & Regulations and the Associate status and alternate pathway.

She highlighted some operational achievements including that we ran approximately 90 CPD courses with approximately 1,400 members and non-members attending and that approximately 700 people had attended the annual conference, which had been held in Napier. She thanked the Central Branch and the Napier Conference Local Committee for their support.

She congratulated the 2019 annual award winners, and especially the Christchurch City Council Urban Design, Regeneration & Heritage Unit and the Community Support, Governance & Partnership Unit, who combined to win the Nancy Northcroft Supreme Award for their work 'Supporting Community Led Planning and Placemaking'. She noted that members also enjoyed international recognition with the 'Draft Waimakariri Residential Red Zone Recovery Plan' by the Waimakariri District Council winning the 2019 CAP Award for Outstanding Planning Achievement in the Commonwealth.

She highlighted some international activities, including the establishment of a working group with PIA, APA, CIP and RPTI focused on operational issues including membership transfer processes and possible recognition of each other accredited qualifications. She noted that our closer relationship with PIA had assisted in policy development,

submissions and the development of our governance and operational functions. She also stated that we had maintained active membership of both GPN and CAP.

Karyn noted that 5 members were recognised with Distinguished Service Awards. She congratulated Reginald Proffit, Amelia Linzey, Christina Robertson, Ken Gimblett and Steve Markham on this recognition.

She discussed our work with Central Government, including lobbying for and securing a seat on the RM Reform Panel for a planning practitioner. She thanked Amelia for her work on this panel. In addition to the reform work she noted we had made submissions on 3 NPS's and 2 bills and are now appearing before select committees to speak to our submissions. She thanked all the members who had engaged with us in developing policy submissions or directly with Central Government. She thanked Graeme McCarrison for leading the charge on a series of workshops on the RM Reform Issues and Options Paper around the country to start 2020.

She welcomed a new Chair, Jade Wikaira, to Papa Pounamu and thanked Reg Proffit for his service as previous chair.

She finished with some specific thank you's.

She thanked Caroline Miller who finished her role as Membership Convenor in 2019 after many years of service to NZPI, noting that she leaves big shoes to fill in this role.

She thanked the members of Tertiary Accreditation Panel for their service in 2019 and congratulated Waikato University who was reaccredited in 2019 and Lincoln University who have just been reaccredited, a process which started in 2019.

She thanked our branch and SIG committees, especially those serving as chair, secretary, treasurer, and PAC representative noting the branch network had been active throughout 2019 with approximately 60 branch events held across the country.

She thanked her fellow Board members and the staff in the national office

Questions arising from 2019 Year in Review presentation

Sue Godbaz asked for a show of hands re Covid effects on members who has been asked to volunteer to work less hours during level four? 19 hands were raised.

2019 finances

Jonathan Cleese, NZPI Treasurer, spoke to the 2019 financial statements as presented in the annual report. He noted that 2019 resulted in another surplus for the Institute, in line with our stated 'earn it before you spend it' philosophy. He also noted that funds had been applied against some strategic initiatives, most notably taking external advice on a revised financial strategy for the Institute and member consultation on the review of the constitution and regulations.

He noted that the surplus was ahead of budget, at approximately \$180,000 and thanked the membership for their on-going support of our activities. He noted that it was pleasing that the Institute had delivered a series of surpluses.

Jonathan reported that the annual audit found no significant anomalies in our finances. He thanked our auditor, accountant, and Savana for their work in ensuring the Board is kept up to date with accurate and comprehensive financial reporting.

He noted that the 2019 surplus had been allocated to a mixture of strategic initiatives and ensuring our reserves were at the newly agreed level, but that this had been reviewed in light of the current situation.



AGM MINUTES

Questions relating to the 2019 financials

How had the \$180k surplus being generated and was this "profit" what was expected? Jonathan advised Napier had been a successful conference. The budget had been set with a conservative profit expectation on Napier and it had delivered an above budget result due to higher than budgeted registrations and continued cost control measures.

NZPI and Covid-19

Jonathan spoke to the impact of Covid-19 on the Institute. He noted that while we were still in the early days of determining how significant the impact of the COVID-19 outbreak would be on the Institute and our membership, it was clear the impact would be significant

He advised that initial modelling had indicated a reduction in income for 2020 of between 50 and 65% and that instead of achieving our budgeted surplus of \$100k, we were now forecasting a loss of between \$350k and \$550k. He noted that while we were still working through the impact, and would continue to do so for some time to come, he could confirm that the work done over the last three years building the Institute financial reserves did mean we could continue to operate for the foreseeable future.

He noted that the forecast losses would wipe out our 'rainy day' fund but highlighted that it was for situations like the pandemic that the fund had been established. He noted that under the worst case modelling the impact of the pandemic would also deplete our other reserves by another \$200k. He reiterated that it was very early days in trying to determine what the impact of this outbreak would be and that it was being closely monitored, but clearly we have had to forecast decreased CPD event attendance, potential reduction in membership and the effects of having to postpone conference.

Postponement of 2020 Conference

Karyn spoke to the postponement of our 2020 Conference. She noted that through careful management of our suppliers the impact had been minimised. She highlighted that outright cancellation would have seen us forego the forecast surplus from the Conference plus have cost upwards of an additional \$300k, as well as incurring significant unrecoverable losses for our members for travel and accommodation. While postponement has still seen us forego the forecast surplus, the unrecoverable costs have been minimised with most costs being able to be transferred to the rescheduled event in 2021. Postponement with an immediate new date being announced had also provided some opportunity for members to transfer costs for travel and accommodation to the new dates

Karyn noted that the Board recognised that the impact of this outbreak is not just financial, and that many of our members are facing a degree of uncertainty about their futures while everyone waits to see the full impact of this outbreak.

She noted changes in our annual CPD requirements to assist members facing uncertainty to maintain their membership.

Question related to Covid-19 impact presentation

What is timeframe for the rainy day funds to be bought back to their current state? Jonathan highlighted that the Institute had taken 4 years to build up the current reserves. Depending on the impact of Covid-19 rebuilding these reserves again will take a minimum of 3 years.

What are main hits on the finances? What strategies are being considered to reduce costs in 2020 and beyond? David Curtis, NZPI CEO, noted that the main hits forecast were a reduction in membership, Conference and CPD. He noted that we are in the early stages at the moment and have been concentrating on 2020 rather than how our 2021 income

will be affected however wherever we can we have been able to transfer costs to 2021 conference and been able to cover this out of reserves.

The Wednesday lunchtime zoom seminars have been great – would be great to see the Institute continue to support and provide these? Caroline Miller (Massey University) confirmed that the Massey Zoom Seminars will continue as long as there is a need and speakers can be secured.

Are these lunchtime zoom seminars category 1 or category 3 CPD points? David advised they were considered category 1 as they were formal training.

Do we know how we will prioritise new projects that will be taken forward in the new budget? Karyn advised that the Board has a work plan which had already looked at this before the shut down and was currently being reviewed for 2021. We currently have 5-6 broader initiatives. At our next meeting in June these will be revisited and priorities checked.

What are the trends in membership? Are the overall numbers similar i.e. new replacing retiring members and what are the student numbers looking like? What impact does membership number changes have on the institute's income? Karyn advised that membership was slowly increasing with new members replacing retiring members and memberships being placed on hold.

Board work-plan.

Karyn noted that progress had been made against the Board workplan in 2019. She advised that the Board expected to complete the review of the Constitution and the Regulations, as well as the review of the Associate category and the alternate membership pathway in 2020. She noted that the other strategic initiatives will also continue to be progressed but were not expected to be completed in 2020. She also highlighted, as noted previously, that the work plan priorities were under review

to ensure we are continuing to prudently manage the Institute in the face of these uncertain times.

She finished by noting that a new Board would be inducted after the 2021 AGM and that anyone interested in serving on the Board should contact their local branch chair or David.

NZPI Annual Awards

Karyn noted that the winners of the Annual Awards would be announced over the next few weeks in Planning Focus, including posting links to their project videos, building to the announcement of the winner of our supreme practice award, the Nancy Northcroft Trophy.

She noted that the Annual Awards did not just recognise best practice in the profession. They also include several scholarships and grants. She proceeded to announce the scholarship winners and grant recipients.

The Reginald Hammond Scholarship

This scholarship is awarded annually to a student entering the final year of study in an NZPI accredited planning degree at the undergraduate or post-graduate level in New Zealand. This year's winner is Elisabeth Boyle – our congratulations to Elisabeth.

The Robert Kennedy Grant

The Robert Kennedy Grant is awarded in recognition of excellence in research that achieves a world-class level of success. Success is exemplified by dissemination of a significant body and depth of work, through peer reviewed publications in international journals, or books, of high repute. This year's recipient of the Robert Kennedy Grant is Associate Professor Caroline Miller.

The inaugural Papa Pounamu Whakatutukitanga Scholarship

This scholarship is sponsored by WSP. Their support has enabled us to introduce this new scholarship, which recognises excellence and attainment by a student planner studying an NZPI accredited planning degree at the undergraduate or post-graduate level and involved in Māori planning in an environmental framework. It considers a student's academic and physical work and how that work might impact or change the understanding or practice of planning in New Zealand. Congratulations to Lucy Sanson for winning the inaugural Papa Pounamu Whakatutukitanga scholarship.

The Lance Lekis Emerging Planner Award

This is awarded in recognition of a significant contribution by an emerging planner from an NZPI accredited course with up to 5 years work experience in the planning field. This year there were a number of nominees and the judging panel ultimately decided that two deserved recognition. The two winners for the 2020 NZPI Lance Lekis Emerging Planner Award are Kaitlyn Ritchie and Esta Makafonokalafi. Both winners showcased outstanding early careers and the judging panel noted Kaitlyn's international work and Esta's work in the Pacifica planning.

The Alfred O. Glasse Award

The Alfred O. Glasse Award is awarded in recognition of outstanding services to planning by non-planners. This year's winner is Colin Wetherall.

Appointment of Accountant and Auditors

Motion: That the membership delegate to the Board the authority to appoint the accountant and auditors for 2020.

Moved: Julie Bevan
Seconded: Bryce Julian
59 hands raised

General Business

A question was raised regarding government infrastructure projects and if NZPI is going to have a role in this process? Karyn noted that the previous week's board meeting had identified several parties that we as an organisation needed to talk to and that we would endeavour to provide an update in next week's Planning Focus.

Closing

Reg led the meeting in a closing karakia. Karyn thanked everyone for their attendance and positive feedback received during the AGM. She thanked the head office staff on behalf of members for their support throughout the year and finally acknowledged the work done by the Board and thanked them directly for their work over the previous year.

Karyn declared the meeting closed at 4:58 pm.



FINANCIAL FOREWORD

2020 delivered our first deficit result in five years. This was expected due the financial impacts of the pandemic and in particular the postponement of Conference 2020. However, the actual deficit of just over \$41,000 was significantly better than was initially forecast following the onset of Covid-19. Initial modelling forecast a deficit of at least \$350,000 and up to \$550,000.

Rapid response to the Covid-19 pandemic, including the pre-emptive postponement (rather than cancellation) of the conference, being eligible for the first round of the Government's wage subsidy, the shift to on-line delivery of the CPD programme and an increased focus on cost containment across the Institute, along with continued support and engagement by members in our events allowed us to keep reducing the deficit throughout the year, ultimately delivering a loss of just \$41,397. This deficit can be readily covered by the rainy day reserve (currently sitting at \$350,000) established in 2019 as part of our new financial strategy. This means the financial impacts of Covid-19 have not impacted on our operational or strategic reserves, ensuring we can continue to operate and engage in strategic initiatives such as the on-going Resource Management Reform process.

We thank the staff in the national office for their dedication and hard work in pivoting the organisation's operations whilst reducing costs where ever possible. We also thank all the members who supported us as presenters, panellists or attendees at our rescheduled events.

Jonathan Clease

Hon Treasurer / Secretary

INDEPENDENT AUDITOR'S REPORT

To the members of New Zealand Planning Institute Incorporated

Opinion

We have audited the financial statements of New Zealand Planning Institute Incorporated ('the entity'), which comprise:

- the statement of financial position as at 31 December 2020;
- the statement of comprehensive revenue and expenses for the year then ended;
- the statement of changes in net assets/equity for the year then ended;
- the statement of cash flows for the year then ended; and
- the notes to the financial statements, which include significant accounting policies.

In our opinion, the accompanying financial statements on pages 21 to 30 present fairly, in all material respects, the financial position of New Zealand Planning Institute Incorporated as at 31 December 2020, and its financial performance and its cash flows for the year then ended in accordance with Public Benefit Entity Standards Reduced Disclosure Regime issued by the New Zealand Accounting Standards Board.

Basis for opinion

We conducted our audit in accordance with International Standards on Auditing (New Zealand) (ISAs (NZ)). Our responsibilities under those standards are further described in the Auditor's responsibilities for the audit of the financial statements section of our report.

We are independent of the entity in accordance with Professional and Ethical Standard 1 (Revised) Code of Ethics for Assurance Practitioners issued by the New Zealand Auditing and Assurance Standards Board, and we have fulfilled our other ethical responsibilities in accordance with these requirements.

We believe that the audit evidence we have obtained is sufficient and appropriate to provide a basis for our opinion.

Other than in our capacity as auditor we have no relationship with, or interests in, the New Zealand Planning Institute Incorporated.

Other information

The executive board are responsible for the other information. The other information comprises the New Zealand Planning Institute Incorporated 2020 annual report on pages 1 to 18, 20 and 31 to 39 (but does not include the financial statements and our auditor's report thereon), which we obtained prior to the date of this auditor's report. Our opinion on the financial statements does not cover the other information and we do not express any form of audit opinion or assurance conclusion thereon.

In connection with our audit of the financial statements, our responsibility is to read the other information identified above and, in doing so, consider whether the other information is materially inconsistent with the financial statements or our knowledge obtained in the audit, or otherwise appears to be materially misstated. If, based on the work we have performed on the other information that we obtained prior to the date of this auditor's report, we conclude that there is a material misstatement of this other information, we are required to report that fact. We have nothing to report in this regard.

Responsibilities of the executive board for the financial statements

The executive board are responsible, on behalf of the entity, for the preparation and fair presentation of the financial statements in accordance with Public Benefit Entity Standards Reduced Disclosure Regime, and for such internal control as those charged with governance determine is necessary to enable the preparation of financial statements that are free from material misstatement, whether due to fraud or error.

In preparing the financial statements, the executive board are responsible, on behalf of New Zealand Planning Institute Incorporated, for assessing the entity's ability to continue

as a going concern, disclosing, as applicable, matters related to going concern and using the going concern basis of accounting unless the executive board either intend to liquidate the entity or to cease operations, or have no realistic alternative but to do so.

Auditor's responsibilities for the audit of the financial statements

Our objectives are to obtain reasonable assurance about whether the financial statements as a whole are free from material misstatement, whether due to fraud or error, and to issue an auditor's report that includes our opinion. Reasonable assurance is a high level of assurance but is not a guarantee that an audit conducted in accordance with International Standards on Auditing (New Zealand) will always detect a material misstatement when it exists. Misstatements can arise from fraud or error and are considered material if, individually or in the aggregate, they could reasonably be expected to influence the decisions of users taken on the basis of these financial statements. A further description of the auditor's responsibilities for the audit of the financial statements is located at the XRB's website at:

https://xrb.govt.nz/Site/Auditing_Assurance_Standards/Current_Standards/Page8.aspx

Who we report to

This report is made solely to the members, as a body. Our audit has been undertaken so that we might state to the members those matters we are required to state to them in an auditor's report and for no other purpose. To the fullest extent permitted by law, we do not accept or assume responsibility to anyone other than the New Zealand Planning Institute Incorporated and the members as a body, for our work, for this report, or for the opinions we have formed.



RSM Hayes Audit

10 March 2021

Auckland

DIRECTORY

*New Zealand Planning Institute Incorporated
For the year ended 31 December 2020*

Nature of Business

Represent Professional Planners

Registered Office

Level 19, 120 Albert Street
Auckland Central
Auckland 1010

Incorporated Society Number

216036

Date of Incorporation

22 December 1949

IRD Number

011-578-675

Officers/Trustees

Board Chair, Karyn Sinclair

Deputy Chair, Luke O'Dwyer

CEO, David Curtis

Treasurer, Jonathan Clease

Auditor

RSM Hayes Audit, Auckland

Bankers

ANZ Bank

Westpac

Chartered Accountant

RightWay Limited

STATEMENT OF RESPONSIBILITY FOR FINANCIAL STATEMENTS

New Zealand Planning Institute Incorporated For the year ended 31 December 2020

The Trustees are pleased to present the approved financial report including the historical financial statements of New Zealand Planning Institute Incorporated for year ended 31 December 2020.

The Board and management accept responsibility for the preparation of the financial statements and judgments used in them, and hereby adopt the financial statements as presented. They also accept the responsibility for establishing and maintaining a system of internal control designed to provide reasonable assurance as to the integrity and reliability of financial reporting. In the opinion of the Board and management, the financial statements for the year ended 31 December 2020, fairly reflect the financial position, financial performance, and cash flows of New Zealand Planning Institute Incorporated.

APPROVED



Board Chair

10 March 2021



Board Member

10 March 2021

STATEMENT OF COMPREHENSIVE REVENUE AND EXPENSE

New Zealand Planning Institute Incorporated For the year ended 31 December 2020

Account	Notes	2020	2019
Revenue			
Revenue from exchange transactions	1	1,193,445	2,262,616
Revenue from non-exchange transactions	1	56,237	-
Total Revenue		1,249,682	2,262,616
Expenses			
Depreciation & Amortisation	2	23,719	22,436
Employee Costs	2	640,225	664,031
Other Expenses	2	649,718	1,433,411
Total Expenses		1,313,662	2,119,878
Finance			
Finance Income		22,583	37,077
Total Finance		22,583	37,077
Surplus/(Deficit) before Income Tax		(41,397)	179,815
Surplus/(Deficit) after Income Tax		(41,397)	179,815
Other Comprehensive Revenue and Expenses		-	-
Total Comprehensive Revenue and Expense for the year		(41,397)	179,815

STATEMENT OF CHANGES IN NET ASSETS/EQUITY

New Zealand Planning Institute Incorporated For the year ended 31 December 2020

	Accumulated Comprehensive Revenue and Expense	Total Equity
As at 1 January 2019	\$1,566,974	\$1,566,974
Surplus/(Deficit) for the year	\$179,814	\$179,814
Other Comprehensive Revenue and Expense	-	-
Total Comprehensive Revenue and Expense for the year	\$179,814	\$179,814
Balance as at 31 December 2019	\$1,746,787	\$1,746,787
Surplus/(Deficit) for the year	(\$41,397)	(\$41,397)
Other Comprehensive Revenue and Expense	-	-
Total Comprehensive Revenue and Expense for the year	(\$41,397)	(\$41,397)
Balance as at 31 December 2020	\$1,705,390	\$1,705,390

STATEMENT OF FINANCIAL POSITION

New Zealand Planning Institute Incorporated As at 31 December 2020

Account	Notes	31 Dec 2020	31 Dec 2019
ASSETS			
Current Assets			
Cash and cash equivalents	3	697,872	981,326
Prepayments	3	204,514	152,737
Receivables from exchange transactions	3	201,096	193,213
Short Term Investments	3	1,205,237	654,285
Total Current Assets		2,308,719	1,981,562
Non-Current Assets			
Long Term Investments	3	20,733	20,733
Property, Plant and Equipment	6	65,730	83,666
Work In Progress - Website	3	59,343	43,750
Total Non-Current Assets		145,806	148,149
Total Assets		2,454,525	2,129,711
LIABILITIES			
Current Liabilities			
Employee benefits	4	44,329	62,152
Lease Liabilities	8	9,336	9,586
Payables from exchange transactions	4	668,320	274,700
Total Current Liabilities		721,985	346,438
Non-Current Liabilities			
Lease Liabilities	8	27,150	36,486
Total Non-Current Liabilities		27,150	36,486
Total Liabilities		749,135	382,924
Net Assets		1,705,390	1,746,787
ACCUMULATED FUNDS			
Accumulated comprehensive revenue and expense	5	1,705,390	1,746,787
Total Accumulated Funds		1,705,390	1,746,787

APPROVED



Board Chair

10 March 2021



Board Member

10 March 2021

STATEMENT OF CASH FLOWS

New Zealand Planning Institute Incorporated For the year ended 31 December 2020

Account	2020	2019
Statement of Cash Flows		
Operating Activities		
Receipts from exchange transactions	1,559,714	2,275,431
Receipts from non-exchange transactions	89,042	-
Payments to employees	(653,697)	(652,186)
Payments to suppliers	719,474	(1,494,925)
Interest and dividends received	21,679	40,970
Resident Withholding Tax	3,377	(894)
GST	1,844	15,729
Net Cash Flows from Operating Activities	1,741,432	184,125
Investing Activities		
Purchase/Sale of property, plant and equipment	(21,482)	(51,624)
Purchase/Sale of Investments	(550,953)	525,433
Net Cash Flows from Investing Activities	(572,435)	473,809
Financing Activities		
Borrowing	(9,586)	-
Finance Costs	(3,917)	(3,917)
Total Financing Activities	(13,503)	(3,917)
Total Statement of Cash Flows	1,155,494	654,017
Account	2020	2019
Cash and cash equivalents		
Cash and cash equivalents at beginning of the year	981,326	327,308
Net increase/(decrease) in cash and cash equivalents	(283,454)	654,017
Cash and cash equivalents at end of the year	697,872	981,325

STATEMENT OF ACCOUNTING POLICIES

New Zealand Planning Institute Incorporated For the year ended 31 December 2020

Reporting Entity

The New Zealand Planning Institute is an Incorporated Society in New Zealand, incorporated under the Incorporated Societies Act 1908 and is a public benefit entity for the purposes of financial reporting in accordance with the Public Benefit Entity Standards Reduced Disclosure Regime (PBE Standards RDR).

Basis of Preparation

a) Statement of compliance

The financial statements have been prepared in accordance with generally accepted accounting practice in New Zealand ("NZGAAP"). The financial statements comply with the PBE Standards RDR as appropriate for Tier 2 not-for-profit public benefit entities. The Association qualifies as a Tier 2 reporting entity as it does not have public accountability and it is not defined as large. All reduced disclosure regime exemptions have been adopted. These financial statements were authorised for issue by the Executive Committee on the date indicated on Statement of Responsibility.

b) Measurement basis

The financial statements have been prepared on a historical cost basis.

The financial report is presented in New Zealand dollars.

SIGNIFICANT JUDGEMENTS AND ESTIMATES

The preparation of the Association's financial statements requires management to make judgements, estimates and assumptions that affect the reported amounts of revenues, expenses, assets and liabilities, and the accompanying disclosures. Uncertainty about these assumptions and estimates could result in outcomes that require a material adjustment to the carrying amount of assets or liabilities affected in future periods.

a) Judgements

In the process of applying the Association's accounting policies, management has made the following judgements, which have the most significant effect on the amounts recognised in the financial statements:

i. Classification of non-financial assets as cash generating assets or non-cash-generating assets

For the purpose of assessing impairment indicators and impairment testing, the Association classifies non-financial assets as non-cash-generating assets as the primary objective of the assets are not to generate commercial return.

ii. Classification of lease arrangements

Whether a lease is a finance lease or an operating lease depends on the substance

of the transaction rather than the form of the contract and the classification of lease arrangements are performed on a lease-by-lease basis.

b) Assumptions and estimation uncertainty

The key assumptions concerning the future and other key sources of estimation uncertainty at the reporting date, that have a significant risk of causing a material adjustment to the carrying amounts of assets and liabilities within the next financial year, are described below.

The Association based its assumptions and estimates on parameters available when the financial statements were prepared. Existing circumstances and assumptions about future developments, however, may change due to market changes or circumstances arising beyond the control of the Association. Such changes are reflected in the assumptions when they occur.

i. Useful lives and residual values

The useful lives and residual values of assets are assessed using the following indicators to inform potential future use and value from disposal:

- The condition of the asset based on the assessment of experts employed by the Association
- The nature of the asset, its susceptibility and adaptability to changes in technology and processes
- The nature of the processes in which the asset is deployed
- Availability of funding to replace the asset
- Changes in the market in relation to the asset

SIGNIFICANT ACCOUNTING POLICIES

The accounting policies set out below have been applied consistently to all periods presented in these financial statements and have been applied consistently by the Association.

Revenue Recognition

Revenue is recognised to the extent that it is probable that the economic benefits or service potential will flow to the Association and the revenue can be reliably measured, regardless of when the payment is being made.

Revenue is measured at the fair value of the consideration received or receivable, taking into account contractually defined terms of payment and excluding taxes or duty.

The specific recognition criteria described below must also be met before revenue is recognised:

i. Revenue from exchange transactions

Subscriptions

Revenue is recognised over the period of the membership or subscription (usually 12 months). Amounts received in advance for memberships or subscriptions relating to future periods are recognised as a liability until such time that period covering the membership or subscription occurs.

Ticketing and entry fees

Revenue from ticketing and entry fees is recognised in surplus or deficit in the period in which the event has taken place. Revenue received prior to the event is deferred and recognised as revenue in advance.

Amounts received in advance for services to be provided in future periods are recognised as a liability until such time as the service is provided.

Sponsorships

The Association receives sponsorships and in return provides material benefits to the sponsor. The sponsorship funding is recognised as the benefits are provided to the funder. Amounts received in advance are recognised as a liability until such time as the service is provided.

Interest income

Interest income is recorded using the effective interest rate. Effective interest rate is the rate that exactly discounts the estimated future cash payments or receipts over the expected life of the financial instrument or a shorter period, where appropriate, to the net carrying amount of the financial asset or liability.

Interest income is included in finance income in the statement of comprehensive revenue and expense.

Event Expenses

Expenses related to events which take place after balance date are deferred and recognised in the next financial year, when the event occurs.

Employee Benefits

Liabilities for wages and salaries (including non-monetary benefits), annual leave and bonus payments are recognised in surplus during the period in which the employee rendered the related services, and are generally expected to be settled within 12 months of the reporting date. The liabilities for these short-term benefits are measured at the amounts expected to be paid when the liabilities are settled.

Income Tax

i. Current income tax

Current income tax assets and liabilities for the current period are measured at the amount expected to be recovered from or paid to the taxation authorities. The tax rates

and tax laws used to compute the amount are those that are enacted or substantively enacted, at the reporting date in New Zealand.

Current income tax relating to items recognised directly in equity is recognised in equity and not in the statement of profit or loss.

Tax calculations are completed on the basis that all activities related to the membership revenue and related expenses are exempt from income tax. Investment income is considered taxable for tax purposes.

ii. Goods and services tax

Revenues, expenses and assets are recognised net of the amount of GST except:

- When the GST incurred on a purchase of assets or services is not recoverable from the taxation authority, in which case the GST is recognised as part of the cost of acquisition of the asset or as part of the expense item, as applicable; and
- In the case of receivables and payables, which are stated with the amount of GST included.

The net amount of GST recoverable from, or payable to, the taxation authority is included as part of receivables or payables in the statement of financial position.

Financial Instruments

The Association's financial assets include: cash and short term deposits, and trade and other receivables.

The Association's financial liabilities include trade and other payables.

i. Initial recognition

All financial assets are recognised initially at fair value plus transaction costs that are attributable to the acquisition of the financial asset.

All financial liabilities are recognised initially at fair value.

ii. Subsequent measurement Loans and receivables

This category generally applies to trade and other receivables and cash and cash equivalents. Loans and receivables are financial assets with fixed or determinable payments that are not quoted in an active market. This category of financial assets is the most relevant to the Association.

After initial measurement, such financial assets are subsequently measured at amortised cost using the effective interest rate method, less impairment. Amortised cost is calculated by taking into account any discount or premium on acquisition and fees or costs that are an integral part of the effective interest rate.

Cash and cash equivalents represent highly liquid investments that are readily convertible into a known amount of cash with an insignificant risk of changes in value, with maturities of 3 months or less.

Financial liabilities at amortised cost:

After initial recognition, trade and other payables and interest-bearing loans and borrowings are subsequently measured at amortised cost using the effective interest rate method.

Gains and losses are recognised in surplus or deficit when the liabilities are derecognised as well as through the effective interest rate amortisation process. The effective interest rate amortisation is included as finance costs in the statement of comprehensive revenue and expense.

Trade and other payables are unsecured and are usually paid within 30 days of recognition. Due to their short-term nature they are not discounted.

Amortised cost is calculated by taking into account any discount or premium on acquisition and fees or costs that are an integral part of the effective interest rate.

Impairment of financial assets

The Association assesses, at each reporting date, whether there is objective evidence that a financial asset or a group of financial assets is impaired. An impairment exists if one or more events that has occurred since the initial recognition of the asset (an incurred 'loss event') has an impact on the estimated future cash flows of the financial asset or the group of financial assets that can be reliably estimated.

i. Financial assets classified as loans and receivables

The Association considers evidence of impairment for financial assets measured at amortised cost (loans and receivables and held-to-maturity) at both a specific asset and collective level.

An impairment loss in respect of a financial asset measured at amortised cost is calculated as the difference between its carrying amount and the present value of the estimated future cash flows discounted at the asset's original effective interest rate. Losses are recognised in surplus or deficit and reflected in an allowance account against loans and receivables.

Property, plant and equipment

i. Initial recognition and subsequent expenditure

Property, plant and equipment is measured initially at cost. Cost includes expenditure that is directly attributable to the acquisition of the items. The cost of an item of property plant and equipment is recognised only when it is probable that future economic benefit or

service potential associated with the item will flow to the Association and if the item's cost or fair value can be measured reliably.

Subsequent costs that meet the recognition criteria above are recognised in the carrying value of the item of property, plant and equipment. Such cost includes the cost of replacing part of the property, plant and equipment if the recognition criteria are met.

When significant parts of property, plant and equipment are required to be replaced at intervals, the Association recognises such parts as individual assets with specific useful lives and depreciates them accordingly.

ii. Subsequent measurement

Subsequent to initial recognition, plant and equipment are measured at cost, net of accumulated depreciation and impairment losses, if any.

iii. Depreciation

Depreciation is charged on a diminishing value basis over the useful life of the asset.

Depreciation is charged at rates calculated to allocate the cost or valuation of the asset less any estimated residual value over its remaining useful life:

Leasehold Improvements

10% - 20% Diminishing Value

Motor Vehicles 30% Diminishing Value

Office Equipment 9% - 67% Diminishing Value*

Website Costs 48% Diminishing Value

* Except for the leased Sharp photocopier. This asset has been depreciated on a straight-line basis over the term of the lease of the asset.

The assets' residual values, useful lives and amortisation methods are reviewed, and adjusted if appropriate, at each financial year end.

An asset's carrying amount is written down immediately to its recoverable amount, or recoverable service amount, if the asset's carrying amount is greater than its estimated recoverable amount or recoverable service amount.

Please refer to policy (i) on impairment of non-financial assets below.

iv. Derecognition

An item of property, plant and equipment is derecognised upon disposal or when no further future economic benefits or service potential are expected from its use or disposal.

Gains and losses on disposals are determined by comparing proceeds with the carrying amount. These are included in surplus or deficit.

NOTES TO THE FINANCIAL STATEMENTS

New Zealand Planning Institute Incorporated For the year ended 31 December 2020

Account	2020	2019
1. ANALYSIS OF REVENUE		
Revenue from Exchange Transactions		
Branch Income	25,158	24,801
CPD Revenue	290,144	544,966
Membership Subscriptions	705,250	687,022
National Conference	-	743,020
Situations Vacant Revenue	120,550	195,469
Other Revenue	52,343	67,338
Total Revenue from Exchange Transactions	1,193,445	2,262,616
Revenue from Non-Exchange Transactions		
Wage Subsidy Received	56,237	-
Total Revenue from Non-Exchange Transactions	56,237	-
2. ANALYSIS OF EXPENSES		
Volunteer and employee related costs		
ACC	1,330	1,435
KiwiSaver	16,008	16,787
Payroll Fees	567	530
Salaries	617,716	623,093
Travel	4,604	22,187
Total Volunteer and employee related costs	640,225	664,031
Depreciation & Amortisation		
Depreciation	23,719	22,436
Total Depreciation & Amortisation	23,719	22,436
Other Expenses		
Branch Expenditure	28,686	39,345
CPD Expenses	177,775	336,716
National Conference	91,323	554,981
Other Expenses	351,935	502,368
Total Other Expenses	649,718	1,433,411

Account	2020	2019
3. ANALYSIS OF ASSETS		
Cash and cash equivalents		
Cash at Bank	697,872	981,326
Total Cash and cash equivalents	697,872	981,326
Long Term Investments		
Term Deposits	20,733	20,733
Total Long Term Investments	20,733	20,733
Prepayments		
Prepaid Expenses	204,514	152,737
Total Prepayments	204,514	152,737
Receivables from exchange transactions		
Accounts Receivable	175,454	174,685
Accrued Income	9,000	-
Interest Accrual	4,878	3,387
Tax Receivable	11,764	15,141
Total Receivables from exchange transactions	201,096	193,213
Short Term Investments		
Term Deposits	1,205,237	654,285
Total Short Term Investments	1,205,237	654,285
Work in Progress - Website		
Work In Progress	59,343	43,750
Total Work in Progress - Website	59,343	43,750
4. ANALYSIS OF LIABILITIES		
Employee Benefits		
Annual Leave Provision	44,329	45,845
Payroll Accrual	-	16,308
Total Employee Benefits	44,329	62,152
Payables from exchange transactions		
Accrued Expenses	15,891	14,400
Accounts Payable	15,167	16,789
Credit Cards	2,776	3,912
ECC Creditor	42,784	54,140
GST Payable	9,997	8,215
Income in Advance	560,913	151,590
Sundry Creditors & Accruals	20,793	25,654
Total Payables from exchange transactions	668,320	274,700

NOTES TO THE FINANCIAL STATEMENTS

New Zealand Planning Institute Incorporated For the year ended 31 December 2020

Account	2020	2019
5. ACCUMULATED FUNDS		
Accumulated Funds		
Opening Balance	1,746,787	1,566,974
Accumulated surpluses or (deficits)	(41,397)	179,813
Total Accumulated Funds	1,705,390	1,746,787
Total Accumulated Funds	1,705,390	1,746,787

6. PROPERTY, PLANT AND EQUIPMENT

Cost	Leasehold Improvements	Motor Vehicles	Office Equipment	Website Costs	Total
Balance as at 31 December 2019	\$26,597	\$46,667	\$108,655	\$39,000	\$220,919
Additions			\$5,783		\$5,783
Disposals					
Balance as at 31 December 2020	\$26,597	\$46,667	\$114,438	\$39,000	\$226,702
Accumulated Depreciation and Impairment					
Balance as at 31 December 2019	\$20,405	\$23,381	\$54,650	\$38,816	\$137,253
Depreciation	\$257	\$6,985	\$16,389	\$88	\$23,719
Balance as at 31 December 2020	\$20,662	\$30,366	\$71,039	\$38,905	\$160,972
Net Book Value					
As at 31 December 2019	\$6,193	\$23,286	\$54,005	\$184	\$83,667
As at 31 December 2020	\$5,935	\$16,300	\$43,399	\$95	\$65,730

7. FINANCIAL INSTRUMENTS

i. Classification and fair values of financial instruments

The table below shows the carrying amount of the Association's financial assets and financial liabilities.

ii. Fair values

The carrying values approximate their fair values.

Account	2020	2019
Carrying amount		
Cash and cash equivalent	697,872	981,326
Short term investments	1,205,237	654,284
Long term investments	20,733	20,733
Short term finance lease	(9,336)	(9,586)
Long term finance lease	(27,150)	(36,486)
Receivables from exchange transactions	175,454	174,685
Payables	(57,951)	(70,929)
Total Carrying amount	2,004,859	1,714,027

8. LEASES

The determination of whether an arrangement is or contains a lease is based on the substance of the arrangement at inception date. The substance of the arrangement depends on whether fulfillment of the arrangement is dependent on the use of a specific asset or assets or the arrangement conveys a right to use the asset, even if that right is not explicitly specified in an arrangement.

i. Finance leases

Upon initial recognition the leased asset is measured at an amount equal to the lower of its fair value and the present value of the minimum lease payments. Subsequent to initial recognition, the asset is accounted for in accordance with the accounting policy applicable to that asset.

ii. Operating leases

Leases that are not finance leases are classified as operating leases. Operating leases are not recognised in the Association's Balance Sheet. Payments made under operating leases are recognised in surplus or deficit on a straight-line basis over the term of the lease. Lease incentives received are recognised as an integral part of the total lease expense, over the term of the lease.

For the rent of the Association's Auckland office, a lease guarantee of \$40,000 has been issued to the counterparty.

Account	2020	2019
Obligations under Leases		
Building and Carpark - Operating Lease		
Not later than one year	52,469	52,469
Later than one year and not later than five years	209,879	209,879
Later than five years	4,372	56,841
Total Building and Carpark - Operating Lease	266,720	319,189
Equipment - Finance Lease		
Not later than one year	9,336	9,586
Later than one year and not later than five years	27,150	36,486
Total Equipment - Finance Lease	36,486	46,072
Total Obligations under Leases	303,206	365,261

9. TAX RECONCILIATION

Surplus/(Deficit) before Income Tax		
Net Profit/(Loss) before Tax	(41,397)	179,814
Total Permanent Differences		
Less Income Received from Members	(705,659)	(687,022)
Add Expenditure Related to Members	265,763	317,491
Total Total Permanent Differences	(439,896)	(369,531)
Timing Differences		
Holiday Pay Last Year	(45,845)	(37,286)
Holiday Pay This Year	44,329	45,845
Audit Fees Accrual Last Year	(14,000)	(14,400)
Audit Fees Accrual This year	14,400	14,000
Holiday Pay Within 63 Days Last Year	16,100	18,156
Holiday Pay Within 63 Days This Year	(20,613)	(16,100)
Total Timing Differences	(5,629)	10,215
Taxable Profit/Loss	(486,921)	(179,503)
Tax losses approved by IRD	(370,232)	(190,729)
Tax Expense at 28%	-	-
Losses Carried Forward	(857,153)	(370,232)

NOTES TO THE FINANCIAL STATEMENTS

New Zealand Planning Institute Incorporated For the year ended 31 December 2020

10. CONTINGENT LIABILITIES

At balance date contingent liabilities have been estimated at \$Nil (2019: \$Nil)

11. RELATED PARTY DISCLOSURE

Board members and relatives of board members were involved in conducting some of the CPD courses offered with the New Zealand Planning Institute Incorporated during the course of the year. These transactions were performed at arms length. Board members are members of the Institute and pay fees consistent with the other members and the related benefits.

In the financial year, the Association paid \$16,705 to Planz Consultants Limited, a company of which Jonathan Cleese is a minor shareholder, for CPD training and course speaking. (2019: \$23,729 paid to Planz Consultants Ltd, a company of which Jonathan Cleese is a minor shareholder.)

Compensation of key management personnel

Key management personnel of the Association include the Board of Directors, and the Executive Management Team (which includes the Chief Executive). No remuneration is paid to the directors. The total remuneration of key management personnel and number of individuals, on a full-time equivalent basis, receiving remuneration from the Association are:

	2020	2019
The number of key management personnel (FTE's)	1.1	1.1
Key management personnel remuneration	\$156,863	\$150,000

Key management personnel did not receive any remuneration or compensation other than in their capacity as key management personnel.

The Association did not provide any compensation at non-arm's length terms to close family members of key management personnel during the year.

The Association did not provide any loans to key management personnel or their close family members.

12. BRANCHES

The financial statements include the income, expenditure, bank funds and deposits of the New Zealand Planning Institute Incorporated branches.

13. POST BALANCE DATE EVENTS

The directors are not aware of any matters or circumstances since the end of the reporting period, not otherwise dealt with in these financial statements that have significantly or may significantly affect operations.

14. COVID-19 IMPACT

Due to COVID-19 outbreak during the year, multiple courses and conferences were cancelled or delayed to next financial year. In addition, the Association recognised the receipt of \$56,237 of COVID-19 Wages Subsidy in total.

Given the financial position and liquid assets the association owns at the date of authorising these financial statements, the board believes the Association will be able to meet its financial obligations for the foreseeable future and the going concern assumption adopted the preparation of these financial statements in appropriate.



MEMBERSHIP DIRECTORY



Life Fellow

Robert Batty
Malcolm Douglass

Fellow

Sylvia Allan
Leigh Auton
Jan Crawford
Sarah Dawson
Jenny Dixon
Jane Douglas
David Forrest
Michael Foster
Paula Hunter
Bryce Julyan
Caroline Miller
Robert Schofield
Alan Watson

Fellow (Partially Active)

John Childs
Ivan Thomson

Honorary

Keith Berman
Ronald Harvey
Miriam Paxie
David Sheppard
Peter Skelton
Arnold Turner

Full

Alistair Aburn
Hanna Afifi
Nicholas Aiken
Greg Aitken
Elizabeth Aitken Rose
Linda Albertyn
Ernest Albuquerque
Leah Alexander
Wayne Allan
Matt Allott
Louise Allwood
Charlotte Almond
Helen Anderson
Denise Anderson
Ree Anderson
Donald Anderson
Hamish Anderson
Thomas Anderson
Alan Anderson
Penelope Anson
Paul Arnesen
Mark Ashby
Justine Ashley
Fiona Aston
Orchid Atimalala
Emily Auton
David Badham
Russell Baikie
Marc Baily
Wendy Baker
Mary-Anne Baker
Bruce Baker
Nathan Baker
Bill Barclay
Peter Barnes
Craig Barr
Hamish Barrell
Sebastian Barrett
Philip Barrett
Jacquiline Bartley
Clare Barton
Andrew Bashford
Craig Batchelar
Judith Batchelor
Mark Batchelor
Wendy Baverstock
Karen Baverstock
Terry Baxter
Ian Bayliss
Emma Bayly
Simon Beale
Rebecca Beals
Lee Beattie
Laurence Beckett
Karen A Bell
Karen S Bell

Jacqueline Bell
Janine Bell
Diana Bell
Mark Benjamin
Tracy Berghan
James Bevan
Julie Bevan
Sarah Bevin
David Bewley
Tanvir Bhamji
Stephen Bigwood
Gulab Bilimoria
Mandy Bishop
Jane Black
Richard Black
Neil Black
Tim Blackman
Scott Blair
Jeremy Blake
Richard Blakey
Tom Bland
Kevin Bligh
Fiona Blight
Daan Blokker
Ian Blundell
Carolyn Bonis
Matt Bonis
Lezel Botha
Julie Boucher
Jessica Bould
Paul Bowman
Felicity Boyd
Terence Boylan
Andrea Brabant
Stuart Bracey
Murray Brass
Justine Bray
Beverley Bray
Nicole Bremner
Robin Britton
Chanelle Brodie
Jeremy Brophy
Helen Brosnan
Marilyn Brown
Jeffrey Brown
Jonathan Brown
Philip Brown
Sarah Brownie
Katrina Brunton
Nigel Bryce
Patrick Buckley
Antony Bullard
Robert Burgoyne
Theresa Burkhardt
Angelene Burn
Owen Burn
Trudi Burney
Aaron Burt
William (Dave) Burton
Dennis Bush-King
Pam Butler
Craig Cairncross
Romae Calland
Olivia Campbell
Cathy Campbell
Michael Campbell
David Campbell
Lisa Capes
Ashlie Carlyle
Nicholas (Nick) Carroll
Anna Carter
Janice Carter
Jennifer Carvill
Andrew Cave
Shirley Chamberlin
Crystal Chan
Vishal Chandra
Raymond (Kah Mun) Chang
Edward Chapman-Cohen
Rhys Chesterman
Robert Chieng
Mark Chrisp
Emma Christmas
Dean Chrystal
Jym Clark
Catherine Clarke
Irene Clarke
Cheryl Cleary
Jonathan Clease
Mark Clews

Gillian Cockerell
Richard N Coles
Aaron Collier
Andrew Collins
Catherine Collinson
Stephen Colson
Colin Comber
Philip Comer
David Compton-Moen
Elva Conroy
Evan Cook
Karl Cook
Kathryn Coombes
Peter Coop
Nicholas Cooper
Dominique Cornford
Christine Coste
Megan Couture
Clare Covington
Ian Craig
Angela Crang
Shae Crossan
Stuart Crosswell
Ro Cudby
Andrew Cumberpatch
Andrew Cumming
Jonathan Cutler
Maurice Dale
James Danby
AnaMaria d'Aubert
Janet Davey
Mark Davey
Treena Davidson
Evan Davies
Keri Davis-Miller
Cecilia Davison
Adele Dawson
Christopher Dawson
Stephen Daysh
Lindsay Daysh
Russell De Luca
Gary Deeney
Andrew Deller
Megan Dever
Liz (Elizabeth) Devery
Blair Devlin
Chris Dillon
Rachel Dimery
Sharon Dines
Rod Dissmeyer
Glenda Dixon
Gavin Donald
Christopher Donnelly
Henrik Dorbeck
Katherine Dorofaeff
Genevieve Doube
Richard Douch
Lee Dove
Sarah Dreadon
Kathryn Drew
Loek Driesen
Maree Drury
Cameron Drury
Jason Drury
John Duffy
Richard Dunbar
Max Dunn
Janan Dunning
John Duthie
Mark Dyer
Joanne Easterbrook
Anna Eatherley
James Ebenhoh
Grant Eccles
John Edmonds
Sarah Edwards
Aaron Edwards
Hywel Edwards
Trevor Ellis
Peter Eman
Geoffrey England
Emma Ensor
Sven Exeter
David Falconer
Janine Fallwell
Herbert Familton
Brett Farquhar
Ben Farrell
Tim Faulkner
Matthew Feary

Louise Feathers
Andrew Feierabend
Claire Fell
Christopher Ferguson
Jonathan Ferguson-Pye
Emma Fergusson
Tim Fergusson
Alex Findlay
Robyn Fisher
Ailsa Fisher
Lynley Fletcher
Stewart Fletcher
Samuel Flewollen
Adam Flynn
Melanie Foote
Nicola Foran
Marilyn Ford
Adam Fort
Samuel Foster
Felicity Foy
Alison Francis
Adam Fraser
Renee Fraser-Smith
Jillian Frater
Claire Freeman
Chris Freke
Keith Frenz
Craig Friedel
Corinne Frischknecht
Jenny Fuller
James Fuller
Tsz Chiu (T.C.) Fung - Stanley
Feng
Megan Gaffaney
Pamela Gare
Trevor Garnett
Mark Geddes
Hester Gerber
Richard Gibbs
Ken Gimblett
Bruce Glavovic
Steve Goeldner
Paula Golsby
Jennifer Goulding
Emily Grace
Sean Grace
Timothy Grace
Robert Graham
Nicholas Grala
Joseph (Joe) Gray
Rebecca Greaves
David Greaves
Ian Greaves
Jennifer Green
Martin Green
Emily Greenberg
Claire Gregory
James Griffin
Matthew Griffiths
Jenny Grimmert
Michelle Grinlinton-Hancock
Andrew Guerin
Phil Gurnsey
David Haines
Kylie Hall
Peter Hall
Keith Hall
Rod Halliday
Bruce Halligan
Manini Hallikeri
Elizabeth Halsted
Helen Hamilton
Brent Hamilton
Shaun Hamilton
Andrew Hammond
Christopher Hansen
Reuben Hansen
Colin Hardacre
Kim Harding
Kim Hardy
Amanda Harland
Jim (Philip) Harland
Susan Harris
Wendy Harris
Andrea Harris
Timothy Harris
Jenny Harrison
Patricia Harte
Alister Hartstone
Stephen Havill

Bruce Hawkins
David Hay
Tracy Hayson
Timothy Hegarty
Susan Henderson
Andrew Henderson
Ralph Henderson
James Hendra
Cath Heppelthwaite
Lance Hessel
Jeff Hextall
James (Hamish) Hey
Stephen Higgs
Simon Hill
Gregory Hill
Wade Hill
Jane Hilson
Craig Hind
Sherilyn Hinton
Rupert Hodson
Brendan Hogan
Matthew Hoggard
Matthew Holder
Ross Holland
Bryce Holmes
Mary Honey
Brett Hood
James Hook
Kathryn Hooper
Lesley Hopkins
Abu Hoque
Chris Horne
Bevan Houlbrooke
Emma Howie
Glen Hughes
Lynette Hughes
Phil Hughes
Sarah Hunt
John Hutchings
Alyson Hutton
Gavin Idle
Ben Inger
Aaron Ingoo
Poul Israelson
Alice Iuli-Tay
Letitcia Jarrett
Adam Jellie
Sarah Jenkin
Lesley Jenkins
Richard Jenkins
Anna Jennings
Alex Jepsen
Alastair Jewell
Juliet Johnson
Peter Johnson
Rachelle Johnston
Pam Johnston
Timothy Joll
Paul Jones
Angela Jones
Ella Jonker
Bruce Junor
Megan Justice
Evan Keating
Terrena Kelly
Claire Kelly
Gavin Kemble
Jeffrey Kemp
Martin Kennedy
Jillian Kennemore
Toni Kennerley
Peter Kensington
Steven Kerr
Patrick Killalea
Geoffrey King
Murray Kivell
Maree Kleinlangvelsloo
Gregory Knell
Kaylee Kolkman
Veena Krishna
Karyn Kurzeja
Vijay Lala
David Lamason
Joy LaNauze
Nathaniel Landingin
Cherie-Ann Lane
Campbell Larking
Emma Larsen
Nicola Laurenson
Mark Laurenson

Graeme Lawrence
Adam Lawrence
Sam Le Heron
Ian Leary
Greg Lee
Deborah Lee Sang
Hugh Leersnyder
Raewyn Legge
Mark Leggett
Monique Leith
Amanda Leith
Aaron Leith
Teryl Lepper
Tim Lester
Anthony Leung
Maciej (Mitch) Lewandowski
Joanne Lewis
Anna Lewis
Rob Lieferring
Mark Lile
Brent Limmer
Kirstyn Lindsay
Amelia Linzey
Claire Liousse
Dougal List
Rebecca Lloyd
Steven Lloyd
Karen Long
Cushla Loomb
Gail Lorier-May
Alastair Lovell
Julia Lovelock
Fiona Low
Kewwa Low
James Low
Paul Lowe
Craig Lunn
Michael Luong
Donald Lyon
Scott Macarthur
Jane Macarthy
Tony MacColl
Roger MacCulloch
Rowena Macdonald
Wendy Macdonald
Barry MacDonell
Dawne Mackay
John Mackay
Kate Mackness
John MacLachlan
Andrew MacLeod
David Macpherson
Kate Madsen
Craig Magee
Kate Magill
David Makani
Ella Makin
Craig Mallett
Lee Marr
Phillip Marshall
Phillip Martelli
Kathryn Martin
Blair Masefield
Alan Matheson
Peter Matich
Hirini Matunga
Tracey-Lee May
Ian Mayhew
Ian McAlley
Stephen McArthur
Sonya McCall
Graeme McCarrison
Gerard McCarten
Sarah McCarter
Andrew McCarthy
Robert McClean
Rachel McClung
David McCorkindale
Christian McDean
Roger McDonald
Murray McDonald
Damien McGahan
Craig McGarr
Bryan McGillan
Paul McGimpsey
Melissa McGrath
Sherie McHardy
Patrick McHardy
Philip McKay
Claire McKeever

Melanie McKelvie
Angus McKenzie
Steven McKenzie
Stewart McKenzie
Helen McLean
Ainsley McLeod
Iain McManus
Bill McMaster
Christine McMillan
Julie McMin
Cathy McNab
Fraser McNutt
Andrew McPhee
Luke McSorley
David Mead
Andrew Mead
Lisa Mein
Jaye Michalick
Franica Mikulicic
Emma Miller
Malcolm Miller
Phil Mitchell
Ross Moffatt
Elizabeth Moncrieff
Helen Montgomery
Gareth Moran
Rachel Morgan
Stella Morgan
Craig Moriarty
Alice Morris
Russell Mortimer
Barry Mosley
Alan Moss
David Moule
David Mountfort
Neil Mumby
Richard Munneke
Ian Munro
David Murphy
Werner Murray
Daniel Murray
Simon Muntonhori
Kim Nathan
David Needham
Peter Neeve
Samuel Nevin
Alison Newbald
Daniel Newcombe
Lynley Newport
Ann Nicholas
Michael Nielsen
Lawrence Njoku
Brad Nobilo
Matthew Norwell
Lauren O'Byrne
Mary O'Callahan
Burnette O'Connor
Luke O'Dwyer
Russell O'Leary
John Oliver
Helen Oram
Suzanne O'Rourke
Greg Osborne
Richard Osborne
Brett Osborne
Helen O'Shaughnessy
Brenda O'Shaughnessy
Katherine Overwater
Matthew Paetz
Jeffrey Page
Matiu Park
Michael Parsonson
Ewen Patience
Megan Patrick
Dave Paul
Carey Pearce
Marguerite Pearson
Nadine Perera
Rebecca Perrett
Heather Perring
Michele Perwick
Belinda Petersen
Richard Peterson
Reuben Peterson
Rhys Phillips
Peter Phillips
Sarah Picard
Leif Pigott
Aruna Pillay
Nesh Pillay

Rachel Pinn
Clare Piper
Penelope Pirrit
Nicholas Pollard
Greg Pollock
Bryce Pomfret
Namouta Poutasi
Reginald Profit
Rachael Pull
Andrew Purves
Brian Putt
Tony Quickfall
Gary Rae
Deepak Rama
Rajiv Raman
Vanita Ranchhod
Marijke Ransom
Neil Rasmussen
Peter Rawson
Catherine Reaburn
Peter Reaburn
Marilyn Regnault
Phillip Reid
Christopher Rendall
Hamish Rennie
Ben Rhodes
Catherine Richards
Shannon Richardson
Tania Richmond
Andrea Rickard
Richard Ritsma
Nick Roberts
Shane Roberts
Mark Roberts
Graeme Roberts
Christina Robertson
Michael Robinson
Daniel Rodie
Deanne Rogers
Paula Rolfe
Katrina Roos
Joanna Ross
Mark Ross
Katherine (Katie) Round
Miles Rowe
Deborah Rowe
Marcus Roy
Marje Russ
Grant Russell
Paul Ryan
Nicola Rykers
Douglas Sadlier
Karyn Sands
Donald Sangster
Rowan Sapsford
Christiane Sargent
Darrell Sargent
Ueligitone Sasagi
Wendy Saunders
Norbert Schaffoener
Michele Schitko
Josie Schroder
Robert Scott
Christopher Scrafton
Sid Scull
Kate Searle
Kim Seaton
Kelly Seekup
David Serjeant
Julie-Anne Shanks
Daniel Shao
Ian Shapcott
Craig Sharman
Deryck Shaw
Neil Sheerin
Laurence Sherriff
Eryn Shields
Rachel Signal-Ross
Aimee Simons
Karyn Sinclair
Heather Sinclair
Timothy Sinclair
Sukdeep Singh
Gur Singh
Ian Smallburn
Rory Smeaton
Melinda Smith
Chris Smith
Wayne Smith
Vaughan Smith

Casandra Smith
Maximus Smitheram
Jarrod Snowsill
Paul Sousa
Janine Sowerby
Andrew Sowersby
Graham Spargo
Nicola Spencer
Doug Spittle
Kristen Spooner
Fiona Sprott
Kathryn St Amand
Mark St Clair
Debra Stan-Barton
Stephanie Steadman
Claire Steele
Tanya Stevens
Bill Stevens
Sarah Stevenson
Mark Stevenson
Carol Stewart
Angela Stewart
Elizabeth Stewart
Philip Stickney
Alison Stilwell
Stephanie Styles
Rebecca Sutton
Caleb Sutton
Jamie Swan
Manea Sweeney
Gina Sweetman
Piotr Swierczynski
Darryl Sycamore
Rachael Symons
Jeremy Talbot
Josephine Tam
Mark Tamura
Kahurangi Tapsell
Louise Taylor
Graham Taylor
Carmen Taylor
James Taylor
Glenn Teal
Kirsten Tebbutt
Ella Tennent
Michael Theelen
Mark Thode
Paul Thomas
Gerard Thompson
Paul Thompson
Michelle Thompson-Fawcett
Karleen Thomson
Emily Thomson
Elliott Thornton
Jason Tickner
Jacqueline Todd
David Totman
Urtwyn Trebilco
Ken Tremaine
Chloe Trenouth
Andrew Trevelyan
Cozy Tsui
Michael Tucker
Christopher Turbott
Richard Turner
Cameron Twigley
Matthew Twose
Perri Unthank
Jessica Urquhart
Jennifer Valentine
Suzanne Vallance
Caroline van Halderen
Hans Van Kregten
Kirsty Van Reenen
Alexander van Son
Peter Vari
Garry Venus
Tim Vial
Mark Vinall
Jennifer Vince
Mike Vincent
Carey Vivian
Melaina Voss
Greg Vossler
Leslie Vyfhuis
Paul Waanders
Alistair (Alex) Wakefield
Siani Walker
Christina Walker
Cameron Wallace

David Wallace
Christopher Walsh
Brian Warburton
Cynthia Ward
Jason Ward
William Wasley
Jo Watts
Lynda Weastell-Murchison
Peter Webb
Penny Weng
Hamish Wesley
Sara Westcott
Andrew Wharton
Elizabeth White
Alistair White
Iain White
Renee Whitesell
David Whitney
Pauline Whitney
Todd Whittaker
Jane Whyte
Duncan Whyte
Paul Whyte
Roger Wiffin
Lahiru Wijewardhana
Linley Wilkinson
Andrew Wilkinson
Roger Willard
Daniel Willcocks
Euan Williams
Scott Williams
Gerard Willis
Robert Willis
Andrew Willis
Laura Willoughby
Louise Wilson
Timothy Wilson
Alina Wimmer
Lolisi Wolfgramm
David Wong
Kevin Wong-Toi
Daniel Wood
Andrew Wood
Michael Wood
Tammy Wooster
Alan Worthington
Carolyn Wratt
David Wren
Jerome Wyeth
Ruben Wylie
Simon Yates
Antony Yates
Yu Yi
Sabrina Young
Jo Young
Nardia Yozin
Mike Yu
Jinyu Zhou
Sean Zieltjes
Eva Zombori
Joseph Zou

Full (Partially Active)

Jane Anderson
Kirsty Austin
Zoe Avery
Kim Banks
Mark Bellingham
Karen Blair
Rebecca Blyth
Emily Buckingham
Laura Buttmore
Amy Callaghan
Phillipa Campbell
Raewyn Catlow
Peter Constantine
Rosalind Day-Cleavin
Rosalind Devlin
Marian Dissanayake
Leonard Dissanayake
Catriona Eagles
Sarah FitzGerald
Amanda Forsyth
Anna Gardiner
Richard Gard'ner
Kirsty Graveling
Sarah Hart
Shane Hartley
Rachel Helme
Vicki Jones

Sarah Jones
 Barry Kaye
 Michelle Kemp
 Monique Kimber
 Anna Maria King
 Tracey Lamason
 Kym Lewis
 Annejo Liang
 Jane Masters
 Mary McConnell
 Kylie McLaughlin-Brown
 Georgina McPherson
 Shelley Milosavljevic
 Nina Murphy
 Kylie O'Dwyer
 Rebecca Payne
 Jane Price
 Claire Price
 Andrew Riddell
 Rachel Ritchie
 Kate Sanders
 Hamish Sinclair
 Dharendra Singh
 Cate Southworth
 Suzanne Speer
 Rachael Stocker
 Laura Swan
 Ken Swinney
 Susannah Tait
 Allison Tindale
 Louise Wai
 Rochelle Waugh
 Jane West
 Grey Wilson

Intermediate

Ben Addington
 Lee Ah Ken
 Toakase Akoteu
 Rodney Albertyn
 Laila Alkamil
 Emily Allan
 Brad Allen
 Marzan Amara
 Carlos Anchieta
 Simon Andrew
 Robert Andrews
 Carine Andries
 Venessa Anich
 Jade Ansted
 Bernadette Aperahama
 Cameron Apin
 Jonathan Arldge
 Holly Atkins
 Elizabeth Au
 Lauren Baddock
 Meggan Bain
 Ben Baird
 Lynette Baish
 Luke Balchin
 Sanjay Bangs
 Simon Banks
 Kathryn Barnes
 Megan Barr
 Kathryn Barrett
 Deanne Barretto
 Jared Bartlett
 Mary Barton
 David Batchelor
 Julia Bates
 Rose Bayes-Powell
 Jane Bayley
 Matthew Bayly
 Fern Beck
 Natalie Bedgood
 Joubert Bekker
 Briar Belgrave
 Kasey Bellamy
 Brad Bellamy
 Simon Bendall
 Myaan Bengosi
 Cristelene Bennett
 Sam Benson
 Amy Beran
 Himani Bhatia
 Aslam Bhikoo
 Scott Bicknell
 Kirsten Binnie
 Mark Bishop
 David Bishop

Gemma Bishop
 Marcus Bishop
 Hermione Blair
 Anthony Blomfield
 Suzanne Blyth
 Kelly Bombay
 Catherine Bonifacio
 Stephanie Bougen
 Katie Bowdler
 Ryan Bradley
 Luke Braithwaite
 Matthew Brajkovich
 Olivia Bretherton
 Solomon Brett
 Michael Briggs
 Karli Bristed
 Gemma-Rose Brooke
 Ryan Brosnahan
 Georgia Brown
 Louis Brown
 Philip Brown
 Cameron Browne
 Laura Brownlie
 Catherine Bryant
 Tania Bryant
 Brigid Buckley
 Sarah Burgess
 Grace Burman
 Alice Burnett
 Petra Burns
 Michelle Burns
 Andrew Calder
 Nikki Callinan
 Antoinette Campbell
 Dougall Campbell
 Richard Campion
 Luke Carey
 Rachael Carruthers
 Sophie Carter
 Clifford Chai
 Michelle (Lok Yan) Chan
 Sujol Chand
 Emma Chandler
 Emma Chapman
 Mark Charlesworth
 Jessica Chen
 Sophia Chen
 Feitong Chen
 Scott Cheng
 James Cheng
 Nita Chhagan
 Tom Chi
 Amelia Ching
 Jennifer Chivers
 Kate Chivers
 Stefanie Christensen
 Laura Christian
 Thomas Christie
 Baris Chung
 Liam Clark
 Larissa (Lara) Clarke
 Sally Clarkson
 Keeley Clayton
 Kirsty Clement
 David Clouston
 Tony Clow
 Samantha Colgan
 Daniel Collis
 Ross Cooper
 Thomas Cooper-Cuthbert
 Rachel Cottam
 Juliana Cox
 Hamish Crawford
 Sean Crocker
 Brent Cryer
 Trevor Cullen
 Ben Cunningham
 Matthew Curran
 Makarena Dalton
 Peter Daly
 Dwayne Daly
 Michael Dance
 Ila Daniels
 Katrina David
 Fran Davies
 Anita Dawe
 Maxine Day
 Tom De Pelsemaeker
 Farida Dean
 Stephanie Dean

Stephen Dennis
 Jaime Devereux
 Sally Dicey
 Scott Dickson
 Rowan Dixon
 Philip Doole
 Samantha Dowse
 Predrag Draca
 Michael Duindam
 Alec Duncan
 Kelly Durham
 Stephanie Dwyer
 Sally Dymond
 Kimberley Edmonds
 Victoria Edmonds
 Hannah Edwards
 Susan Edwards
 Sally Elford
 Sophie Elliott
 Katrina Ellis
 Catherine Elvidge
 Rebecca Eng
 Tara Enright
 Ruth Evans
 Morgan Fallowfield
 Harrison Fernandes-Burnard
 Sara Field
 Blair Firmston
 Michelle Flay
 Bridie Fleming
 Rosie Flynn
 Miffy Foley
 Lauren Ford
 Karen Foster
 Abbie Fowler
 Monique Frampton
 Cara Francesco
 Junitta Fretton
 Samuel Fuchs
 Yujie Gao
 Paul Gardiner
 Ross Gardiner
 Holly Gardiner
 Stephen Gascoigne
 Sarah Gathercole
 Alice Xinyue Ge
 Alison Geddes
 Teresa George
 Zenaida Gerente
 Claire Gibb
 Frances Gibbons
 Lisa-Maree Gibellini
 Paul Gibson
 Alex Gifford
 Wednesday Gilbert
 Nancy Gomez
 Lana Gooderham
 Ross Goodman
 Angela Goodwin
 Elizabeth Gosling
 Matthew Gouge
 David Grant
 Katrina Gray
 Brad Greening
 Ayvron Greenway
 Jackson Greenwell
 Aaron Grey
 Lucy Groenhardt
 Ashleigh Gulliver
 Haoran - Jeffrey Guo
 Kristina Gurshin
 Nerilee Hakkaart
 William Hall
 Ana Hancock
 Isabel Hand
 Jodie Hansen
 Steph Hantler
 Rereata Hardman-Miller
 Chanel Hargrave
 John Harold
 Kendyll Harper
 Bill Harrington
 Rebecca Harris
 Nathan Harris
 Shaun Harvey
 Kathleen Haylock
 Alyce Heine
 Hamish Henderson
 Joseph Henehan
 Gen Hewett

Brendon Hewett
 Elizabeth Hislop
 Irene Ho
 Josef Holland
 Daniella Holschier
 Nikki Honan
 Graham Hooper
 Keith Hornby
 Alice Hosted
 Megan Howard
 Hsin-Hua (Sandy) Hsiao
 Kai Xin (Katherine) Hu
 Judy (Qiu Yan) Hu
 Christine (Shi Ting) Huang
 Tianxu (Brian) Huang
 Antonio Huang
 Raymond Huang
 William Hung
 Katrina Hunt
 Tara Hurley
 Mathew Husband
 James Imlach
 Karen Inglis
 Zoe Ishrar
 Rochelle Jacobs
 Rakad Jaffar
 Luka Jansen
 Sisira Jayasinghe
 Joseph Jeffries
 Holly Jenkins
 Isobel Jennings
 Anshita Jerath
 Jethro Joffe
 Anna Johnson
 Alyssa Jones
 Stephanie Jowett
 Shona Jowett
 Stephanie Kane
 Ye Kang
 Jasmin Kaur
 Samantha Kealey
 Gemma Kean
 Caitlin Kelly
 Michelle Kennedy
 Joshua Kennedy
 Thomas Keogh
 Matthew Kerr-Ridge
 Matthew (Matt) Keyse
 Nathan Keyte
 Daniel Kinnoch
 Aidan Kirkby-McLeod
 Ike Kleynbos
 Matthew Klomp
 Keita Kohere
 Alice Kranenburg
 Vincent Kuo
 Sheena Kwan
 Camille Ladyman
 Tommy Lai
 Morgan Laird
 Elisabeth Laird
 Swastika Lakhan
 Nirnay Lakshman
 Jordyn Landers
 Nicholas Law
 Helen Lawrence
 Romel Layco
 Rhezza Layco
 Esther (Ju Hyun) Lee
 Bronwyn Lees
 Karin Lepoutre
 Jo Lester
 Kerryanne Lewis
 Peixuan Li
 Kirk Lightbody
 Andreas Lilley
 Ashrita Litori
 Fleur Lincoln
 Sonja Lister
 Xinran (Audrey) Liu
 Tianhang Liu
 Ying Liu
 Marie Long
 Andrew Long
 Sophie Lord
 Joey Lott
 Robert Love
 Carl Lucca
 Anna Luu
 Nick Lynch-Watson

Tommy Ma
 Charlotte MacDonald
 Philippa Mackay
 Matthew Mackay
 Eseta Maka - Fonokalafi
 Teina Malone
 Toby Mandeno
 Don Manlangit
 Fennel Mason
 Craig Mathieson
 James Mathieson
 Tim Matthews
 Amy Maxwell
 Katie Maxwell
 Ryan McAlister
 Carolyn McAlley
 John McCall
 Peter McCoskrie
 Hugh McCullough
 Adam McCutcheon
 Torrey McDonnell
 Angela McFlynn
 Shane McGhie
 Holly McGrouther
 Carolyn McIntyre
 Alison McLaughlin
 Emma McLean
 Fiona McLeod
 Jacqueline McNae
 Lucy McWilliam
 Kristina Mead
 Adam Mercieca
 Lisa Miers
 Christopher Miles
 Andrew Miller
 Connie Mills
 Haylee Minoprio
 Shravan Miryala
 Jasmine Mitchell
 Nick Mitchell
 Olivier Monthule-McIntosh
 Christopher Moore
 Kimberley Morete
 Samuel Morrison
 Joy Morse
 Claire Morton
 Patrick Moss
 Sarah Mossman
 Mary Muller
 Leonie Mullions
 Bridget Murdoch
 Vincent Murphy
 Gavin Murray
 Masato Nakamura
 Evelyn Neal
 Olivia Neame
 Esther Neill
 Cassandra Ng
 Susan Nicholas
 Hoda Nozari
 James Oakley
 Kataraina O'Brien
 Simon O'Connor
 Hannah O'Kane
 Cole O'Keefe
 Elisha Oldridge
 Ryan O'Leary
 Sarah Oliver
 Greer Oliver
 Georgina Olsen
 Josephine Orange
 Catherine Orford
 Heather Osborne
 Paul O'Shaughnessy
 Kirsty O'Sullivan
 Samantha O'Sullivan
 Alison Outram
 David Pan
 Kay Panther Knight
 Anna Papaconstantinou
 Mary Pappou
 Jayesh Parekh
 Rebecca Parish
 Kon-Woo (Caleb) Park
 Jessica Parulian
 Kate Pascall
 Gareth Pasfield
 Sunit Patel
 Emily Patterson
 Jonathan Payne

Nyssa Payne-Harker
Hannah Payne-Harker
Ashlee Peters
Nicola Petrie
Tamara Phillips
Jessica Phillips
Jeremy Phillips
Rebecca Phillips
Georgia Pieri
Luke Place
Maxwell Pocock
Gareth Pottinger
Bryce Powell
Ciaran Power
Rory Power
Lisa Poynton
Sabrina Quarente
Adele Radburn
Lauren Rae
Jessica Rainford
Katherine Randell
Brittany Ratka
Susan Rawles
Natasha Reid
Azman Reuben
Kimberley Richards
Oliver Richards
Matthew Richards
Kate Richardson
Philippa Riddell
Injoo Riehl
Florian Risse
Kaitlyn Ritchie
Sally Robins
Tessa Robins
Wendy Robinson
Eilish Robinson
Sarah Robson
Simon Roche
Ann Rodgers
Devon Rollo
Jessica Rose
Duncan Ross
Matthew Round
Melanie Rountree
Marcus Ruddock
Michelle Ruske
Jonathan Ryan
Rashida Sahib
Nathan Saluni
Rebecca Sanders
Steven Sanson
Anna Sanson
Pamela Santos
Cosette Saville
Charlotte Sayer
Kathryn Schicker
Lorelei Schmitt
Charlotte Scotchbrook
Michael Scott
Hamish Scott
Alexandra Scouller
Nirosha Seelaratne
Daniel Shaw
Richard Sheild
Ella Shields
Chyi Sim
Elizabeth Simpson
Taljit Singh-Sandhu
Jamie Sirl
Natasha Sitarz
Wayne Wing Ho Siu
Suzienne Slegers
Fiona Small
Renata Smit
Janelle Smith
Lydia Smith
Vijay Soma
Jessica Sorensen
Marina Spasovska
Janine Speedy
Kura Stafford
Erin Stagg
Alana Standish
Shenan Stanton
Nassah Steed
John Stenberg
Holly Stevens
Anna Stevens
Simon Stewart

Sean Stirling
Nathan Stocker
Kerstin Strauss
Matthew Stulen
Qiaojun (Erica) Su
Brittney Sutherland
John Sutherland
Annika Swanberg
Chi Wah Szeto
Angela Taganahan
Zita Talaic-Burgess
Judy (Hui Min) Tan
Fion Tang
Steph Taylor
Melanie Taylor
Nathaniel Te Pairi
Blair Telford
Cedric Tevaga
Kasuni Thewarapperuma
Matthew Thode
Hayley Thomas
Rachael Thomas
Kahlia Thomas
Amy Thompson
Hannah Thomson
Laura Thomson
Campbell Thomson
Caleb Tien
Simon Titter
Michael Treacy
Imogen Trupinic
Yuto Tsuchiya
Steve Tuck
Penelope Tucker
Jessica Tuilaepa
John (Jack) Turner
Manasi Vaidya
Hannah van Haren-Giles
Anita Vanstone
Charlotte Veikune
Bridget Venning
Brendan Versluys
Hinetaakoha (Hayley) Viriaere
Hayden Wadams
Clare Wall Shaw
Nicole Wallace
Shannon Wallace
Krystal Walton
Melody Wang
Qiuan Wang
Lucy Wang
Wayne Wang
Xizheng Wang
Phoebe Watson
Shannon Watson
Sam Watson-Holmes
Thomas (Tom) Watts
Natalie Webb
Elsa Weir
Bruce Weir
Sarah Westoby
Sarah White
Erin Whooley
Scott Wickman
Vanessa Wilkinson
Sonja Williams
Nicola M Williams
Miriam Williams
Karen Williams
Simone Williams
Kirsten Williamson
Rachael Willox
Kent Wilson
Lindsay Wilson
Liam Winter
Halley Wiseman
Sarah Wong
Mary Wong
Kevin Wood
Nicola Woodhead
Mikayla Woods
Alexander Wright
Kerry Wynne
Lihua Xie
Jessie Xie
Milcah Xkenjik
John Yan
Danielle Yeoman
Hui Yin
Denise Young

Benedict Yu
Kasey Zhai
Jimmy Zhang
Mia (Miao) Zhen
Yuren (Yuna) Zhou

Intermediate (Partially Active)

Vanessa Addy
Natasha Adsett
Susan Arndt
Rachael Bason
Alice Blackwell
Lisa Blundell
Terry Conner
Rebecca Gallacher
Laura Galt
Sarah Gunnell
Pia Jackson
Alexandra King
Raj Maharjan
Ruth Markham-Short
Katie Martin
Erina Metcalf
Josephine Michalakias
Gemma Moleta
Arna Neivandt
Sonya Nicol
April Peckham
Astrid Powell
Natasha Rivai
Alisha Robinson
Emma Spalding
Fiona Stephenson
Gael Stevens
Sarah Thompson
Annemarie Townsley
Charlotte Vellinga
Adam Vincent

Graduate

Catherine Absil-Couzins
Sara Abusidou
Temi Allinson
Timothy (Tim) Anderson
Katrina Andrews
Marzuq Asgar
Brandon Baillie
Maiah Barnfield
Mayce Bates
Kenton Baxter
Pip Beachen
Rebecca Beattie
Nicholas Beattie
Anette Becher
Cillian Bell
Fletcher Bell
Nicolai Berry
Mayuri Bhole
Kate Blagrove
Carlo Botha
Kaylie Bramley
Liam Burkhardt
Joanna Chow
Crystal-Chaiwon Chung
Oliver Clausen
Leigh Clutterbuck Young
Lily Conradie
Daniel Cooper
Logan Crawford
Joshua Crawshaw
Rosanna Daly
Christian Davey
Stephen Davis
Xiaoxuan (Claire) Deng
Gowan Ditchburn
Fraser Dixon
James Dobson
Shivaun Dockery
Thushan Dodampegamage
Danielle Douglas
Roxanne Dow
Denver D'Souza
Rebecca Einarsen
Luke Elliott
Alice Falloon
Julia Familton
Jay Feng
Arthur Flintoff

Jeff Fuller
Mitchell Fuller
Tara Ghanim
Gabriela Glory
Jesse Gooding
Sierra Gordon
Shivaani Gounder
Adriene Grafia
Angus Gray
Lydia Guo
Eamon Guthrie
Michael Guy
Benjamin Haddrell
Phoebe Hall
Melissa Hallett
Hyebin Han
Rebecca Hare
Oliver (Olly) Hermans
Charlotta Heyd
Nevada Huaki-Foote
Bryony Hutcheson
Callum Inns
Ekrina Iose
Tai Il (Darren) Jeong
Gabriela Jimenez Rojas
Cameron Joe
Claudia Jones
Idris Jones
Brendan Judd
Alexandra Kitson
Mitchell Kuhn
Madi Lawry
Isobel Lee
Hugh Loughnan
Dion Luke
Diana Luong
Suraj Mahimkar
Khiroyna Mani
Christine Martelletti
Fleur Martin-Austin
Melanie McCormick
Emily McDonald
Samantha (Sam) McGough
Ashley McMillan
Te Wakaunua Milki-Te Kurapa
Nusipepa (Pepa) Moefili
Nureen Mohammed
Eleanor Monk
Tom Morgan
Jackson Morgan
Matthew Morley
Brianna Morris
Georgia Morton
Anastacia (Staci) Munthree
Meghana Muthappa
Jess Neeve
Emma Norman
Sarah Osborne
Christopher Pearse-Smith
Stuart Pearson
Hannah Pettengell
Christie Pilkington
Nigya Pokhrel
Emily Reid
Claudia Richardson
Callum Riddle
Hilary Riordan
Jacob Robb
Jemma Ryan
Emma Ryder
Maneesha Sakamuri
Kate Scanlen
Moana Schoffa
Rebecca Shaw
Sam Shears
Hannah Shields
Hannah Shingler
Elizabeth Shires
Courtney Sinclair-Eagle
Polly Smith
Torin Smith
Ho Yin (Lewie) So
Ella Sparrow
Hannah Staines
Lynne Sun
Hamish Sykes
Mandy Tang
Damian Tang
Bridget Taylor
Lee Kong Te

Alicia Todd
Rosie Troughton
Charlie Tseng
Max Turver
Greg Underwood
Jerson Valenzuela Cisternas
Emily Vandy
Nicolle Vincent
Cassey Wan
Kok Hong Wan
Olivia Whyte
Mandy (Amanda) Wilson
Kendra Wilson
Ivy Wong
Jane Woods
Oksana Zhang
Helene Kirpensteijn
Elizabeth Whitton

Student

Amy a'Beckett
Nicki Ablitt
Sarah Adams
Ashlee Adams
Hannah Adamson
Lisa Ahm
Allegro Alagao
Krystal Alferez
Aseal Al-harbi
Omar Ali
Joshua Aliifaalogo
Ghazala Ambreen
Zoe Anderson
Lewis Anderson
Sophie Andrews
Stephanie Andrews-Paul
Bill Apusae
Kestri Ariyanti
Zoe Arts
Vincent Ashman
Helah Atal
Bennet Atkins
Catherine Auckram
Rebecca Austin
Joseph Azer
Wiktorija Badran
Matthew Bai
Ethan Banal
Andrew Banks
Louise Barclay
Etienne Baring
Boris Barnett
Abdulrahman Bashir
Samuel Beadle
Ben Beer
Angela Bell
George Bell
Dan Benny
Jake Beresford
Chinley Bernardo
Jean Berry
Lily Berry
Amina Bhikoo
Ross Bidlake
Mia Bigalk Shanks
Miranda Birchler
Darren Botha
Kurt Bowen
Liv Boyle
Linore Brav-Cubitt
Liam Breedt
Sophie Brocklesby
Damon Burdett
Zachary Burns
Felicity Butcher
Sarah Butler
Aimee Byers
Sherilyn Byron
Zekai (Kelby) Cai
Matthew Campbell
Junlin Cao
Sarah Capper-Liddle
Hineirangi Carberry
Hary Carlson
Bradley Carson
Darwin Chan
Rahul Chand
Sonam Chandra
Booster (Tsz Kui) Chau
Pinglin Chen

Zachary Chisam
Devon Christensen
Della Clark
David Clark
William Clarke
Jonathan Clarke
Dylan Clayton
Dylan Cliff
Isobel Cochrane
Ruby Collins
Jacquelyn Collins
Laura Collins Van Rangelrooy
Irina Mihaela Condurachi
Matthew Connell
James Connon
Justine Cook
Maggie Cook
Samuel Cooper
Logan Copland
Valerie Cortes
Nomesia Costa dos Reis
Tamzin Cowie
Jack Cowie
William Craig
Laura Cranston
Hannah Craven
Harry Crawford
Ryan Crawford
Layla Croker
Kiri Crossland
James Cummins
Oliver Davidson
Jacinda Davis
Matheson Day
Tyrone Deiye
Kara Dentice
Deanna Di
Vignesh Divakar
Ethan Dodds
Caitlin Dodswoorth
Mark Dold
Olivia Dommert
Brynya Downey
Angela Drake
Andrew Duncanson
Nicholas Eady
Shonelle Eccles
Jessica Ensing
Heleina Erasito
Alexander (Alex) Erceg
Edwar Eshow
Jessica Esquilant
Vyvienne Evans
Laura Everett
Kate Fan
Jackson Fankhauser
Yisi (Cecilia) Feng
Kirsten File
Kahurimu Flavell
Marcus Fletcher
Elsie Flynn Fleming
Emeline Fonua
Grace Forno
Benjamin Foster
William Foster
Kipp Franklin
Dermot Frengley
Angela Fusitua
Shawn Gardner
Pero Garlick
Jonathan Gensik
Amberley Gibson
Duncan Gibson
Joanna Gilroy
Renee Godfrey
Mithran Gopinath
Aron Goundar
Brigid Graney
Adam Gray
Layla Gruebner
Hannah Gully
Abby Guo
Oliver Haarhoff
Joyce Habgood
Lucy Halcrow
Isabella Halligan
Sam Hammond
Mawardah Nur Hanifiyani

Anna Hanley
Christina Hanna
Cas Hannink
Melanie Hardiman
Isabella Hardy
David Harnett
Oliver Harper-Quayle
Fern Harpham
Cameron Harridge
Melissa Harvey
Benjamin Haworth
Mitchell Haywood
Qinhui He
Eleanor Heal
Mitchell Heaven
Kyle Hefferon
Nikora Heke
Paige Herbst
Andrew Hill
Emma Hilson
Turi Hippolite
Jazmynn Hodder-Swain
Jacob Hodgson
Moeli Homasi
Corriana Hooker
SinMeun How
Julia Howard
Vicky Hu
Aaron Hudson
Emilia Hutchins
Sarah-Jane Hutchinson
Judith (Lynley) Hutton
Emily Ireland
Christian Isaac
Janna Isles
Thejas Jagannath
Si Yea Jeh
Eejoo Jeong
Laura Jessen
Tim Jiang
Hai Tao Jing
Jin Woo Jo
Katrina Jordan
Niamh Judd
Josivini Kaloumaira
Hannah Kane
Ruth Keeling
Cecile Kellman
Jorgia Kelsey
Joshua Kendrew
Joshua Kenneally
Christopher Khouri
Ben Kildare
Caitlin Killick
Matthew Kilpatrick
Benny (Seo Young) Kim
Jeehyeon Kim
Luke Kim
Portia King
Julia Kingham
Ella Klinac
Josephine Knight-Maclean
Katie Knopp
Sarah Knott
Lucy Knowles
Josh Knowles
Akari Kurimasa
Robyn Kvalsvig
Lily Lamble
John(Jun) Lan
Marie Landingin
Jacob Lassen
Sana Lavai-Motlagh
Niki Lee
Alice Lee
Helen Lee
Eun Jung Lee
Blake Lee
Yat Fung Joshua Lee
Zoe Lee La Selle
Xhloe Lee La Selle
Rose Leighton
Matthew Lemon
Tara Lennard
Kate Leyland
Michelle (Qiao Chu) Li
Changzai Li
Sharon Li

Tianyu Li
Kris Lian
Jojo Liang
Max Lichtenstein
Micolle Lim
Deborah Lin
Wei Lin
Adam Lines
Victoria Liu
Jiajia Liu
Toby Loe
Feng Long
Brydon Lucas
Lan Luo
Sinead Lynch
Trent Lynch
Tamara MacDonald
Alex MacDonald
Vile Mackenzie
Benjamin MacKinnon
Hayley Mahon
Jacques Maitland
Moalapau'u Maka
Alana Mako
Joshua Mandeno
Jacob Marshall
Katherine Martin
Helen Matunga
Caitlin McClellan
Malcolm McCracken
Lachlan McCullough
Clare McDaniel
Joshua McDonald-Davies
Joseph (Joe) McDougall
Leah McEnhill
Emily McEwan
Tommy McKinnon
Jake McLaren
Colin McLeay
Melissa McMullan
Kelsey Mee
James Miguel
Natalie Milicich
Alice Millar
Liam Milne
Jonathan Mitchell
Zachery Montgomery
Amanda Moore
Andrew Moorman
Mia Morgan
Aabhas Moudgil
Ayush Mudaliar
Nina Muijsson
Connor Muir
Allie Mulholland
Andrew Murtagh
Bridget Napper
Mira Narula
Dexter Navarro
Abigail Naylor
Helen Neale
Meyer Neeson
Judith Neilson
Rosemaree Nepia
Michael Nettleship
Mona Neumann
Annabelle Newell
Kelsey Newman
Han Long (Eddie) Ng
Tin Chon Ng
Ashleigh Ngow
Kerry Ni
Christine Niblock
James Nicol
Samuel Nicoll
Stella Norris
Pareputiputi Nuku
Vaughan O'Brien
Tegan O'Callaghan
Younjin Oh
Taylor O'Hearn
Annabelle Osborne
Yat Oudom
Luke Paanakker
Donna Paki
Brilee Parker
Alex Parr
Krupa Patel

Pranami Patel
Hitarthi Patel
Amit Patel
Ryan J Patterson
Joshua Patterson
Jordan Pauw
Scott Payne
Samuel Peplow
Joshua Pepperell
Oscar Perress-Wills
Juliette Perry-Dumarquez
Lazar Petkovic
Madeline Petronelli
Sophie Peyton
Rachael Phillipson
Jaclyn Phillott
Junior Scott Pitisopa
Isabelle Plaisted
Ali Raja
Morgan Ramsay
Simone Rebello
Anna Reddish
Savannah Redmond
Michaela (Micky) Reilly
Dian Septa Rianti
Mia Richmond
Zoe Rogers
Jess Romhany
Andrew Ross
Lucy Rossiter
Cameron Rossouw
Jackson Rowe
Alex Russell
Yohan Ryoo
Sara Sahagian
Achini Samarasekara
Thidarat Samart
Ellen Sanders
Nicholas Sanders
Lucy Sanson
Kirby Scammell
Johanna Schacht
Millie Schwarz
Louis Schwer
Joy Seseve
Michael Sharp
Mark Shelly
Brenna Sherson
Phillip Shipton
Jaime Short
Nasha Sidhu
Ding Simin
Nicholas Simpson
Tamara Simunic
Kate Skipworth
Annabel Small
Nola Smart
Stelios Smilas
Kirsty Smith
Frederick Smithers
Vannita Som
Emily Somerfield
Bridget Spence
Nicola Steele
Imogen Steiner
Katie Stephens
Katelyn Stephens
Olivia Steven
Teresa Stevenson
Barbara Stevenson
Sian Stirling
Rosie Stoney
Harry Stovold
Valeria Sukhorukova
Mike (Haoyang) Sun
Gita Suwandi (Yulianti)
Stacy Tahere
Aurora Tahi Tahi
Natsumi Takahashi
Marama Takayawa
Joanne Tan
Claire Tan
Levin Tan
Daisy (Zhe) Tang
Anh Tang
Xuemei Tang
Hone-'Oe-Fa'efita Taungapeau
Daniel Taylor

William Thursfield
Laura Tinker
Christie Tippet
Mandy Tocher
Connor Tomoana
Georgia Tremeer
Thomas Trevilla
Blaise Turnbull
Emma Turner
Natalia Uriasheva
Pim van den Top
Annika Van Dorp
Jason Van Niekerk
George van Pelt
Brittany Vari
Agelika Vaze
Johanna Verhoeck
Rory Vernon
Bhargavi Vindamuri
Sameer Vinnakota
Jennifer Vo
Klazien Voogt
Jasmine Wagner
Te Rua Wallace
Penelope Wallis
Yinghan Wang
Sai Wang
Alice Wang
Rushan Wang
Yunlong Wang
Jacinta Ward
Melissa Warmenhoven
Joshua Waterman
Monique Way
Caitlin White
Anne Wilkins
Sophie Wilkinson
Michaela Williams
Ella Williams
Elizabeth Williams
Sally Wills
Henry Winchester
Terri Winder
Kim Woelper
Jianan (Jenna) Wu
Wendy Xie
Annika Yuanru Xu
Ranhao (Adrian) Xu
Achmad Yakini
Janette Jiayi Yan
Angela (Ya-Chun) Yang
Jinyi Yang
Zhenyu Yang
Shu Ping Ye
Kylie Yin
John Yin
Joyce Young
Chumin Yu
Michael Yu
Hayden Zervos
Li Zhang
Iris Zhang
Shu Zhang
Jimmy Zhang
Mary Zhou
Feng Zhou
Elias Zhou
Simiao Zou

Associate

Clare Abbiss
Dev Affleck
Neda Akbarzadeh
Anna Alexander
Rayya Ali
Matthew Allan
Bridget Allen
David Allen
Salma Amirshakari Razno
Maiki Andersen
Robert Anderson
Conrad Anderson
Helen Andrews
Ruth Andrews
Kim Anstey
Mark Arbutnot
Maheeka Ariyapperuma
Bramantino Armiento

Rebecca Astwood	Milan Covic	Dean Glen	Jason Jones	Blair McLean
Helen Atkins	Daniel Cox	Ethan Glover	Michael Jones	Anna McLellan
Edita Babos	Aileen Crow	Susan (Sue) Godbaz	Hayley Jones	Kate McNab
Matthew Bacon	Jessica Crawford	Jordan Godfrey	Karen Joubert	Jeffrey McNeill
Marsha Badon	Cathy Crooks	Claudia Gonzales Pino	Jennifer Joynt	Anne McNoe
Jonathan Bainbridge	Allan Cubitt	Stephen Goodwin	Hannah Julian	Karlene McPike
Arlene Baird	Clare Dale	Fiona Gordon	Te Puawaitanga (Puawai) Kake	Alastair Meehan
Jeff Baker	John Daly	Chelsea Gosden	Selene Kane	Andrew Methereil
Remo Bangi	Laura Dance	Hannah Goslin	Andrew Kantor	Shanan Miles
Mishka Banhidi	Sarah Davidson	Kelly Governor	Simon Karl	Tracey Miller
Coralie Barker	Rebecca Davies	Kate Graham	Sharyn Kashyap	Murray Miller
Timothy Barnard	Craig Davison	Tracey Grant	Te Pio Kawe	Jack Mills
Lorelle Barry	Richard Davison	Nicola Green	Leon Keefer	James Minehan
Kathleen Barry-Piceno	Amanda de Jong	Simon Greening	Nathan Keenan	Christine Mitchell
Ezra Barwell	Eynon Delamere	Erin Griffith	Scott Kelly	David Mitchell
Shannon Baxter	Kristen Dempster	Ashleigh Grose	Justine Kennedy	Vrinda Moghe
Helen Bealey	Summer Denize	Courtney Guise	Susannah Kerkham	Roy Montgomery
Mathew Bell	Sean Dent	Pauline Hadfield	Gerry Kessels	Sean Mooney
Russell Bengie	Neeta Deo	Geoffrey Haines	Bahareh Khodaparast	Kailas Moral
Helga Bennett	Leona deRidder	Joseph Hale	Melanya King	Amanda Moran
Brooke Benny	Gemma Dioni	Alexander (Alex) Hall	Alexandra King	Fliss Morey
Anna Bensemann	Hannah Divehall	Michael Hall	Nicola Kirby	Michael Morris
Amilie Bentley	Rachel Dodd	Garrett Hall	Andrew Kirk	Kate Morrissey
James Berghan	Francis Doesburg	Daniel Hames	Stephanie Kirk	Tracey Morse
Kelsey Bergin	Melanie Donaghy	Sarah Hamilton	Deborah Kissick	Ella Mowat
Johan Bergman	Damienne Donaldson	Daniel Hamilton	Christopher Kissling	Bridgette Munro
Natasha Berkett	Micah Donaldson	Natalie Hampson	Danielle Korevaar	Stephanie Murphy
Simon Berry	Nico Donovan-Pereira	David Hampson	Rae-Anne Kurucz	Ashwita Murphy
Clint Betteridge	Jane Doogue	Lindsay Hannah	Isabel Lam	Jane Murray
Paul Beverley	William Dorset	Mimouk Hannan	Benjamin Lam	Brent Musk
Hayden Bewley	Brendan Doyle	Paula Hansen	Jennifer Lancashire	Victoria Mylchreest
Kelsey Bewley	Graeme Drake	Sheryl Hansford	Nicholas Lau	Sandhira Naidoo
Sean Bignell	Tess Drewitt	Sam Hapuku	Joanna (Jo) Laurenson	Purnima Naidu
Richard Bigsby	Carissa du Plessis	Paula Harborne	Michael Lawrie	Priyashni Nair-Mudaliar
Alex Billot	Rachel Ducker	Ella Hardman	Katrina Lee	Sally Neal
Kelly Bingham	Sarah Duffy	Rochelle Hardy	Kuanjin Lee	Jacob Neaves
Kim Bird	Matthew Dugmore	David Harford	Nessa Legg	Elyse Neville
Stephanie Blick	Maaike Duncan	Neil Harkin	Peter Linde	David Newey
Anastasia Blignaut	Alex Dunn	Richard Harkness	Matthew Lindenberg	Heong Ng
David Boersen	Michael Dunphy	Belinda Harper	Wen Liu	Nichola Nicholson
Catherine Boulton	Monique Dyer	Brett Harries	Brigid (Biddy) Livesey	Will Nicolson
Chanti Boyle	Monique Eade	Matthew Harrison	Sarah Lockwood	Jo Noble
Anne Bradbury	Scott Edgar	Joanna Hart	Kim Logan	Bronwyn Norrie
Carel (Wayne) Bredemeijer	Christine Edgley	James Hassall	Eloise Lonnberg-Shaw	Nathan O'Connell
Edith Bretherton	Todd Elder	Colin Hattingh	Jeffrey Loo	Emma O'Neill
Billy Brough	Karwan Eliassi	Lisa Hayes	William Loutit	Claudine Osborne
Natasha Brown	Timothy Ensor	Joanne Healy	Adrian Low	Hamish Osborne
Daniel Brown	Nicola Etheridge	Sylvie Heard	Philippa Lynch	Malory Osmond
Aimee Brown	Sarah Evans	Philip Heffernan	Kenny MacDonald	Baylee O'Sullivan
Catherine Brunet	Katherine Exeter	Terrina Helliwell	Joao Machado	Jill Owen
Linda Bruwer	Sarah Exley	Sarah Heritage	Andrew MacLennan	Matthew Parker-Bevin
Jeremy Brydon	Douglas Fairgray	Nicole Heron	Warren MacLennan	Scott Paton
Amber Buckley	Luke Faithfull	Helen Hicks	Jane Macleod	Terriann Payne
Mark Buckley	Richard Falconer	Stacey Hikairo	Kathryn Maguire	Hamish Peacock
Quentin Budd	Lance Feather	Mary Hill	Huda Majeed	Whitney Peat
Kathleen Bunting	Sue-Ellen Fenelon	Sarah Hills	Victoria Majoor	Stuart Penfold
Jesse Burgess	Angela Fenemor	Carly Hinde	Therese Malcon	Mike Pentecost
Cole Burnmester	Margaret Ferguson	Annabel Hobson	Nicole Malpass	Adrian Percival
Rebecca Burton	John Ferguson	Matt Hoffman	Tabitha Manderson	Claire Perkins
Jeremy Butler	Rod Finlayson	Rebecca Holden	Jessica Mangos	Brianne Peters
Micah Butt	Timothy Fischer	Lucy Holden	Taunu Manihera	Charlotte Phelps
Josh Caddigan	Thomas Fitzgerald	Alanna Hollier	Kayla Manson	Claire Phillips
Jennifer Caldwell	Andrew Fitzgerald	Jessica Hollis	Thomas Marchant	Bryce Phillipson
Helen Caley	Jennifer Folster	Vivienne Holm	Mat Marois	David Phizacklea
Sarah Cameron	Mineeta Fox	Vanessa Honore	Lisa Marquardt	Son (Sean) Phung
Lily Campbell	Tony Fraser	Russell Hooper	Laura Marra	Samuel (Sam) Pickering
Nathan Capper	Paul Freeland	Karyn Hopkins	Andrea Marshall	Helen Pickles
Tina Carlson McColl	Michael Freeman	Charlie Hopkins	Darelle Martin	Nina Pivac
Andy Carr	Peter Fuller	Charles Horrell	Charlotte Martynoga	Dylan Pope
Victoria Caseley	Paul Futter	Ruth Hudson	Marsha Mason	Samantha Pottage
Kelly Cattermole	Jo Fyfe	Bevan Hudson	Julia Masters	Esther-Amy Powell
Reza Chalabianlou	Siatua Gabriel	Emily Hunt	Vincent (Vince) Matschke	Anna Price
Louise Chauhan	Jhonny Gaglione	Samual (Sam) Hurley	Elias Matthee	Dawn Pritchard
Jian Chen	Jeannie Galavazi	Ian Hyde	Fiona Matthews	Natasha Pritchard
Stephanie Chin	Kylie Galbraith	Mansor Ibrahim	Lynka May	David Pullar
Peter Christophers	Penelope Gallagher	Rebecca Inwood	Francesca McAdam	Jessica Pullen
Richard Clare	Wendy Gallagher	Jennifer Jack	Rachelle McBeth	Karla Putt
Leah Clark	Deborah Ganley	Rebecca Jackson	Hannah McCashin	Erin Quin
Ben Clearwater	Kim Garner	Alexandra (Alex) Jamieson	Nicholas McCool	Leandra Raats
Amanda Coats	Nathan Geard	William (Bill) Jamieson	Zoe McCormack	Andrew Rabbidge
Carys Coleman	Xiaoxiao (Megan) Geng	Erica Jane	Michael McEnaney	Caroline Rachlin
Laura Coll McLaughlin	Mark Georgeson	Iresh Jayawardena	Andrew McFarlane	Mhairi Rademaker
Julie Comfort	Ensiyeh Ghavampour	Nadia Jefferis	Lisa McGlinchey	Marius Rademeyer
Gemma Conlon-Geddes	Kerstin Ghisel	Helen Johnson	Harriet McKee	David Randal
Matt Conway	Sumita Ghosh	Barry Johnson	Josh McKone	Christopher Randell
Glen Cooper	David Gibson	Anna L. Johnson	Matthew McLachlan	Matthew Read
Brodie Costello	Brett Giddens	Anna Jones	Louise McLay	Annie Reed
Frederic Coughlan	Sam Gifford	Cameron Jones	Simeon McLean	Dory Reeves

Natalie Reeves
 Nicole Reid
 Barbara Ribeiro
 Luke Richards
 Megan Rickerby
 Clare Ridler
 Nathan Riley
 Joanne Ritchie
 Peter Roan
 Ellen Robotham
 Melissa Rodger
 Corne Roelofse
 Danielle Rogers
 Scott Rose
 Kathryn Ross
 Kaaren Rosser
 Parvati Rotherham
 Patricia (Trish) Routley
 Peter Runcie
 Tanya Running
 Katie Russell
 Sue Ruston
 Natalie Rutland
 Stuart Ryan
 Lillie Sadler
 Summer Salmon
 Jess Samuels
 George Sariak
 John Scheele
 Bianca Schoeman
 Mark Schreurs
 Vanessa Scott
 Alison Scott
 Nicola Scott
 Deborah Scott
 Caroline Secretin
 Amy Selvaraj
 Sonya Seutter
 Michelle Seymour
 Stacey Sharp
 Martin Sharp
 Tyler Sharratt
 Christina Sheard
 Niamh Sheehy
 Jade Shepherd
 Morgan Shepherd
 Samuel Shuker
 Alisdair Simpson
 Carrie Skilton
 Joanne Skuse
 Hera Smith
 Nadine Soutschka
 Glenda Spackman
 Sian Spear
 Matthew Spiro
 Kristin St John
 Kelly Standish
 Lisa Steele
 Rebecca Steenstra
 Karen Steer
 Olivia Stirling
 Tim Stoddart
 Louise Strogon
 Bianca Sullivan
 Cameron Sunde
 Mark Swartz
 Ashiley Sycamore
 Elsa Synders
 Melanie Taiaroa
 Kaustubh Tamaskar
 Christine Tarr
 Belinda Taurua-Hill
 Alicia Taylor
 Emma Taylor
 Amber Taylor
 Carmel Taylor
 Neil C Taylor
 Hayden Taylor
 Richard Taylor
 Danielle Ter Huurne
 Corinna Tessendorf
 Lizzie Thomson
 Margot Thomson
 Daniel Thorne
 Adrianne Tisch
 Vicki Toan
 Fazilat Tooranian
 Rachel Townrow
 Laura Townshend
 Katie Treadaway
 Jeremy Trevathan

Michelle Tsang
 Lucia Tugaga
 Warren Ulusele
 Tyro Underhill
 Pamela Unkovich
 Victoria van der Spek
 Louise van der Voort
 Alexandra van Rooyen
 Elmira Vatani
 Rebecca Vella-King
 Lhani Voyle
 Hamish Walker
 Cathy Wallace
 Ian Wallace
 Shaoux Wang
 Jonathan Ward
 Bernard (Bernie) Warmington
 Kate Watson
 Samuel Watts
 Pauline Webby
 Mark Weingarth
 Beate Weir
 Susan (Sue) Wells
 Stephen West
 Lyndon Westlake
 Ashleigh Wharam
 James Whetu
 Michelle Whitaker
 Nicole White
 Anna Wilkes
 Paige Wilkinson
 Alan Wilkinson
 Rowan Williams
 Jeremy Williams
 Nick Williamson
 Belinda Willis
 Natasha Wilson
 Sarah Wilson
 Tyneal Windelborn
 Nic Wingrove
 Gabi Wolfer
 Louise Wood
 Natalie Wood
 Andrew Woodford
 Nicholas Woodley
 Kirsty Woods
 Jacob Woodward
 Diana Worthy
 Jason Wright
 Melanie Wykes
 Ewan Wymer
 Vesa Xharra
 Jill Young
 Tom Young
 Marc Zablotny
 Peri Zee
 Minnie Zhang
 Peng Zhang
 Dianne Zucchetto

Associate (Partially Active)

Taya Baxter
 Susanne Bernsdorf Solly
 Neda Bolouri
 Wayne Donovan
 Kellie Ellis
 Bess Halley
 Aimee Haycock
 Helen Heard
 Emma Hilderink
 Courtenay Isherwood
 Dyanna Jolly
 Joanne Pacey
 Hannah Palmer
 Rebecca Robertson
 Antonia Vincent

Retired

Murray Arnold
 Bryan Bang
 Max Barber
 John Betts
 Dirk Bolt
 Elizabeth Briggs
 Murray Cameron
 Christine Caughey
 David Chandler
 John Cook
 Brian Coutts
 Peter Crawford

Hester den Ouden
 John Dryden
 Ross Dunlop
 Kathryn Edmonds
 Lindsay Gow
 Matthew Grainger
 Joy Grant
 David Grove
 Rex Hannam
 Robert Hayles
 Ewen Henderson
 David Hinman
 Patricia Holm
 David Hookway
 Richard Johnson
 Stuart Kinnear
 Keith Mahony
 John Mandemaker
 Philip McDermott
 (James) Fraser McRae
 Robert Nixon
 Shelagh Noble
 Keith Phyn
 Graham Power
 Christine Ralph
 Andy Ralph
 William Robertson ONZM
 Robert Schlotjes
 Helen Tobin
 Eileen von Dadelszen
 Pip Wallace
 Vernon Warren
 William Watt
 Ted Wells
 Alan Withy
 Robert Wyber
 Stephen Wynne-Jones
 Adrienne Young-Cooper

Non-Active

Anna Belz
 Kylie Brayshaw
 Jaimee Cannon
 Alia Cederman
 Glodia Choi
 Eleanor Christensen
 Lucy Deverall
 Jennifer Edwards
 Jennifer Esterman
 Gemma Ferguson
 Alexandria Fraser
 Susannah Goble
 Tiffany Gower
 Claire Gray
 Sarah Haarhoff
 Andrew Hillgrove
 Pippa Huddleston
 Rachelle Hui
 Emily Ip
 Lucy (Xinran) Ji
 Susan O Jones
 Rhedyn Law
 Sarah MacCormick
 Jessica Manhire
 Sarah Marshall
 Sarah McCarthy
 Sara McMillan
 Sarah McPhee
 Grace Ng
 Shirley Pang
 Patricia Paschke
 Robert Peel
 Rachel Purdy
 Elisabeth Resl
 Victoria Rhind
 Kimberley Rolton
 Cushla Salt
 Rochelle Sewell
 Mark Simpson
 Allenie Smith
 Rosanne Stewart
 Alexandra Strawbridge
 Tessa Sutherland
 Anna Thomson
 Fritha Witton

Technician

David Bridges

Welcome to the following people who became Full members in 2020:

Sebastian Barret
 Clare Barton
 Lezel Botha
 Jessica Bould
 Cathy Campbell
 Mark Davey
 Jason Drury
 David Greaves
 Shaun Hamilton
 Jennifer Lancashire
 Rachel Morgan
 Craig Moriarty
 Tracey Morse
 Katherine Overwater
 Rachel Signal-Ross
 Elliot Thornton
 Christina Walker
 Penny Weng
 Mark White
 Daniel Willcocks
 Jerome Wyeth

2021 AGM AGENDA

March 25, 2021

- Welcome and Karakia
- Attendance and Apologies
- 2020 AGM Minutes
- Annual Report
- Annual Accounts
- Welcome and introduction of incoming Board
- Appointment of Accountants and Auditors
- General Business
- Closing





***"A city is more than a
place in space, it is a
drama in time"***

— Patrick Geddes



NEW ZEALAND
PLANNING INSTITUTE®
Te Kokiringa Taumata



Auckland Head Office

Level 19
120 Albert Street
Auckland City
PO Box 106-481
Auckland City 1143
New Zealand
Phone: +64 9 520 6277
Email: admin@planning.org.nz
planning.org.nz

Branches

Auckland/Northland
Waikato
Bay of Plenty
Central North Island
Wellington
Nelson/Marlborough
Canterbury/Westland
Otago
Central Otago
Southland
United Kingdom